



SATURDAY 22ND SEPTEMBER 2012

7PM UNTIL LATE

THE GOSS-MICHAEL FOUNDATION
1405 TURTLE CREEK BOULEVARD, DALLAS TX 75207
WWW.MTVREDEFINE.COM

CURATED BY:



HOSTED BY:

**THE GOSS-MICHAEL
FOUNDATION**

AUCTION PARTNER:



PHILLIPS
de PURY & COMPANY

FOREWORD

SIMON
DE PURY

WE ARE PROUD AT PHILLIPS DE PURY TO
ONCE AGAIN LEND OUR SUPPORT TO THE
MTV STAYING ALIVE FOUNDATION AND TO
THE GOSS-MICHAEL FOUNDATION THIS YEAR.

They are doing tireless work in the fight against
HIV and AIDS that continue to necessitate our
full attention and vigilance.

A number of highly talented and generous
artists have donated excellent works to raise
badly needed funds.

It will be a privilege for me to conduct the auction
and I am happy for this to be my reason to come
back to Dallas, a city that I love.

Simon de Pury
Chairman
Phillips de Pury & Company



Photo: Mr Barnabas Imre

INTRODUCTION

THE FUTURE
TENSE

FROM THE MOMENT OF ITS INCEPTION IN 2011 WE COMMITTED TO DIFFERENTIATE THE RE:DEFINE EVENT FROM OTHERS OF ITS ILK BY, AMONGST OTHER THINGS, APPLYING A MORE CONSIDERED CURATORIAL APPROACH TO SECURING THE INVOLVEMENT OF ARTISTS AND THE ARTWORKS THEY SO KINDLY DONATE.

Of course, this is no small challenge and one that is compounded by the current global economic climate, since it is already a giant leap asking artists to donate the valuable time, energy and emotion they invest in creating a new piece of art.

Fortunately the unequivocal success of the inaugural RE:DEFINE event in 2011 has served to embolden our unique approach, ensuring the involvement of another incredible roster of talent from across the spectrum of contemporary art today, for which we are eternally grateful.

Our primary aim with RE:DEFINE is always to present a vital mix of both established and emerging artists, spanning as many disciplines as possible. We also attempt to embrace a

modern, artistic interpretation of the infamous 'MTV generation' moniker throughout the event.

Within that broad structure we look to encompass one or two main themes. In 2011 we successfully combined pop imagery with icons – from Shepard Fairey's take on the American flag to Russell Young's shimmering diamond dust Bardot.

In 2012 our primary focus turns to photography and colour. Photography is a rapidly growing force in contemporary fine art, and RE:DEFINE brings together museum-quality works from leading names such as Ralf Kaspers, Michael Reisch, Mat Collishaw, Juergen Teller, and Gérard Rancinan, the latter of whom recently broke the auction record for a living French photographer.

The theme of colour is a nod towards MTV and expands on recent experiences curating the SPECTRA show in late 2011. Key lots include a brand new and unseen large orchid oil by Marc Quinn, a specially created and highly collectable unique piece by New York artist, Ryan McGinness as well as works from Jen Stark, Jim Houser, Tomokazu Matsuyama and the unmistakable colour blocks of British artist, James Hugonin.

The colour theme also extends to this year's public installation, where Lee Baker will transform a corner of Dallas into one of his trademark luminous landscapes in what will be his largest installation to date.

Ed Bartlett and Paul Missing

The Future Tense
www.thefuturetense.net



Photo: Mr Tom Oldham

THE MTV STAYING ALIVE FOUNDATION

GEORGIA ARNOLD

IT GIVES ME GREAT PLEASURE TO WELCOME YOU TO THE SECOND RE:DEFINE AUCTION AND EXHIBITION. THANKS TO THE OUTSTANDING SUCCESS OF OUR FIRST EVENT IN 2011, TONIGHT BRINGS TOGETHER ANOTHER REMARKABLE ROSTER OF ESTABLISHED AND EMERGING ARTISTS FROM ACROSS THE CONTEMPORARY ART SCENE.

I am delighted to be working with The Goss-Michael Foundation and The Future Tense again to create a unique and exciting platform upon which we can celebrate the exclusive works of these many artists. Reflecting the talent and creativity you see before you, RE:DEFINE will continue to help the MTV Staying Alive Foundation support young, creative, and talented young leaders across the world and their vital grassroots HIV prevention work.

At The MTV Staying Alive Foundation, our mission is simple: to stop the spread of HIV among young people before it starts. And to achieve that mission, we are driven by four simple rules that govern everything we do.

Number one: Be Passionate.
HIV and AIDS is still killing people. While we've come a long way in tackling the epidemic, we can't afford to take our foot off the gas now. That's why we're maintaining our passionate and proactive approach to HIV prevention, even if it upsets a few apple-carts along the way.

Number two: Be Preventative.
We will not just wait for a cure. By equipping young people with the knowledge required to keep themselves and those around them safe from HIV infection, we push hard for prevention to stop HIV before it even starts.

Number three: Be Holistic.
Campaigns won't work in isolation. That's why we champion a multi-pronged approach to HIV prevention. It's our combination of smart and relevant programming being distributed globally, with creative on-the-ground community action being taken locally, that make us stand out from the crowd.

And last but not least, number four: Be Creative.
We don't stick to any predefined rules in our fight against the epidemic. We're ready to break boundaries, confront taboos, and challenge orthodoxy in our pursuit of an HIV free generation.

And it's this fourth and final rule that brings us all together tonight. By being creative, we're keeping the world's attention on HIV; the only way that we can continue on our path to beating it.

Each and every one of the pieces that make up this year's auction and exhibition demonstrate outstanding creativity in their reflection of the RE:DEFINE ethos. I hope that you enjoy the theme of colour and photography that has emerged this year, and I'm sure you'll agree that we have achieved great things once again.

I thank you in advance for your generosity and support, and look forward to sharing this very special evening with you all.

Georgia Arnold
Executive Director
The MTV Staying Alive Foundation



THE GOSS-MICHAEL FOUNDATION

KENNY &
JOYCE GOSS

FOR THE SECOND YEAR IN A ROW, WE ARE HONORED TO BE THE HOST FOR RE:DEFINE, THE ART AUCTION AND GALA BENEFITTING THE MTV STAYING ALIVE FOUNDATION.

The funds raised at tonight's event will empower young people globally who are fighting to conquer HIV in their communities. The success of the inaugural RE:DEFINE in 2011 has reinforced our love of art and driven us to make this year's event more magnificent than the last.

We are thrilled to present a wide spectrum of art made possible by the generosity of an incredible roster of both established and emerging contemporary artists whose creativity and contribution make the exhibition and auction possible.

The MTV Staying Alive Foundation is once again bringing international awareness to the forefront of the deadly, but preventable disease. The Goss-Michael Foundation is proud to be a part of this fantastic effort that began fourteen years ago with a documentary hosted by George Michael that explored the lives of young people affected and infected by HIV. Tonight, with your help, we get to underwrite the brilliant enterprise of young people around the world as The MTV Staying Alive Foundation will donate 100% of the proceeds from the art auction.

Our sincere gratitude goes out to the artists, sponsors, patrons and host committee for their continued generosity and to our co-chairs, Jessica Olsson-Nowitzki and Anna- Sophia van Zweden for their passion and enthusiasm, all in support of a cause we care so deeply about.

With our love and support,
Joyce Goss and Kenny Goss



Photo: Mr Steve Benisty

INSTALLATION

LEE BAKER

THE DALLAS CITY SKYLINE HAS LONG BEEN ICONIC, AND FOR THE 2012 EDITION OF RE:DEFINE WE WANTED TO WORK WITH AN ARTIST WHO COULD INTERPRET SOME OF THE INEXORABLE FLUX OF DEVELOPMENTS IN AND AROUND THE CITY.

Backed by headline sponsor, The Joule, the chosen artist is emerging British artist Lee Baker, who is rapidly generating a global reputation for his vivid paintings and installations. Drawing on the narrative and scenic elements of films such as Katsuhiro Otomo's 'Akira', Disney's 'Tron' and further exploring the idea of a self aware 'thinking' city developed in films such as 'Tekkonkinkreet' and Makoto Shinkai's 'A Place Promised in our Early Years', Lee Baker's art practice explores stark visions of the indestructible meta-city against the indiscriminate and unstoppable forces of nature.

Lining the pedestrian corridor linking Main St. and Elm St., this 100' mural will bring to life a temporary fascia lining the deconstruction of the old Praetorian Building, immersing passers-by in Bakers' highly contemporary color palettes and deliberately skewed perspectives.

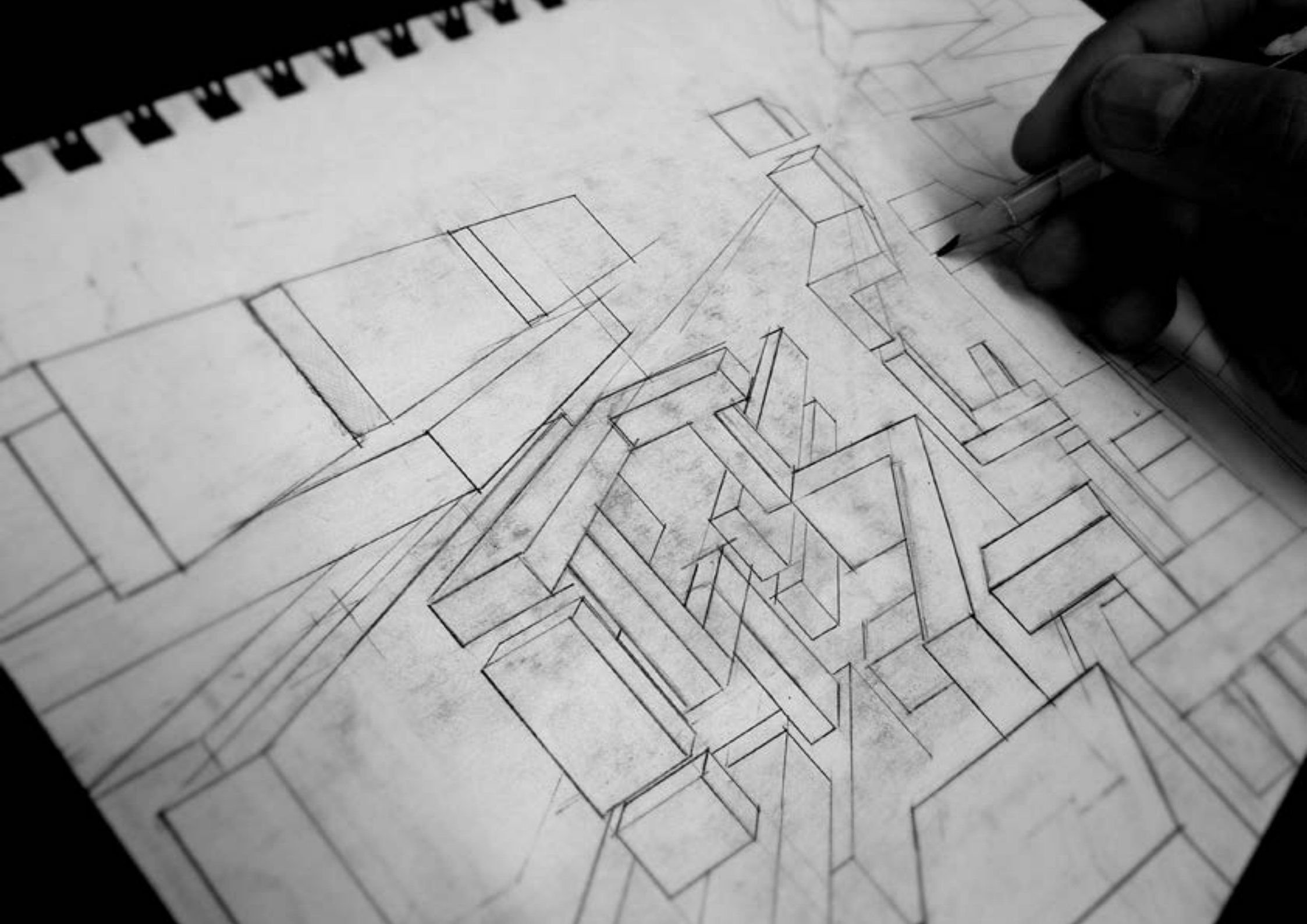
In responding to the brief, Baker was immediately struck by the parallels that exist at the core of his art practice. The rise and fall of seemingly indomitable man-made cities is the inspiration for his current work, and the impending destruction and redevelopment of this imposing and historical structure provided the artist with valuable inspiration for his proposal.

Work on the mural will begin on September 10 and will be completed ready for the RE:DEFINE gala event at The Goss-Michael Foundation on Saturday, September 22.

The site is across the street from the flagship Neiman Marcus store, The Joule Hotel expansion project and within walking distance of the internationally acclaimed Dallas Arts District.

Locals and visitors are welcome to stop by the site at any time to see the artist at work.

www.leebakerart.com



LIVE PAINTING

DAVE WHITE

WHEN RE:DEFINE WAS ORIGINALLY CONCEIVED, ONE OF THE PRIMARY AIMS WAS TO CREATE AN EVENT WHICH EXPANDS BEYOND THE TRADITIONAL BOUNDARIES OF A CHARITY FUNDRAISING GALA.

With a free public exhibition, curator and artist talks and a major public installation taking place in Dallas during the fortnight leading to the auction, for RE:DEFINE 2012 we wanted to bring people even closer to the art by featuring an extraordinary live painting experience.

The artist in residence will be British contemporary artist, Dave White. White is one of few artists to successfully (dare we say effortlessly) juggle an immensely successful fine art career with bleeding edge creative work for some of the world's leading lifestyle brands, including his signature Air Jordan sneakers.

White also worked on the 'Project on Creativity' with Chuck Close at the New Museum of Contemporary Art, New York in 2010, where he has exhibited again this year in 'CNNCTD+100', showcasing the 100 cultural influencers of this generation with Cindy Sherman and Pharrell Williams.

For RE:DEFINE 2012, White will transform the reception area of the Goss-Michael Foundation into a temporary studio, offering attendees a unique opportunity to witness his highly kinetic painting style first hand as he completes a brand new work, which will be auctioned live on the night by Simon de Pury.

www.davewhiteart.com



RE:DEFINE

SALES INFORMATION

Auction

Saturday 22 September 2012,
8.45pm at The Goss-Michael Foundation,
1405 Turtle Creek Boulevard, Dallas TX 75207

Viewing

Friday, September 14th -
Thursday, September 20th:
10.00am - 6.00pm, except
Saturday: 10.00am - 4.00pm
and closed on Sunday and Monday.

Absentee Bids

For absentee bidding including live
telephone and online bidding please visit
http://www.mtvredefine.com/absentee_bidding.php

Enquiries

+1 (214) 696-0555
info@mtvredefine.com

RE:DEFINE

MAIN
AUCTION

ITEM 01

CHUCK ELLIOTT B. 1967

Collider / Gilded Mandala, 2011

Metallic Lambda print
mounted on Diasec
Artist's proof
120 x 120 cm (47.2 x 47.2 in)
This work is from an
edition of 12 + 2 A/P.

Estimate \$5,000 – 7,000

Courtesy Chuck Elliott



ITEM 02

SCOTT CAMPBELL B.1977

Daisy Hand, 2012

Laser cut US currency
31.75 x 53.34 cm (12.5 x 21 in)

Estimate \$5,000 - \$7,000

Courtesy Scott Campbell



TAT ITO B.1978

The Love Suicide at Shinagawa: Code K, 2012

Gouache, graphite, pen, gold leaf and colored silver leaf on paper on panel
61 x 61 cm (24 x 24 in)

Large Investigation, 2011

Acrylic, pen, graphite and colored silver leaf on paper on panel
30.48 x 22.86 cm (12 x 9 in)

Sold as a diptych.

Estimate \$2,000 - \$4,000

Courtesy Joshua Liner Gallery



ITEM 04

PARRA B.1976

Riverdance, 2012

Acrylic on Canvas
100 x 140 cm (39.37 x 55.12 in)

Estimate \$4,000 - \$6,000

Courtesy Parra



ITEM 05

DAVE WHITE B.1971

Warrior III, 2011

Oil on Linen
101 x 76cm (40 x 30 in)

Estimate \$15,000 - \$20,000

Courtesy Dave White



ITEM 06

MICHAEL REISCH B.1964

Landscape 7/040, 2009

C-Print mounted on Diasec
Ed. 2/8
160 x 280 cm (62.9 x 110.2 in)
This work is from an edition of 8

Estimate \$15,000 - \$20,000

Courtesy Hengesbach Gallery Berlin



ITEM 07

MARY MCCARTNEY B. 1969

Catwalk I, 1999

Fibrebased Print
50.8 x 60.96 cm (20 x 24 in)
This work is from an Edition of 10

Estimate \$2,000 - \$4,000

Courtesy Mary McCartney



ITEM 08

CHARMING BAKER B.1964

*All I Want Is Love, Attention And
Permission To Fail (black)*, 2011

Patina And Polished Bronze
Artist's Proof
33 x 30 x 20 cm (13 x 11.81 x 7.87 in)
This work is from an Edition of 9

Estimate \$24,000 - \$28,000

Courtesy Charming Baker



LEE BAKER B.1969

Tsunami Claims Meta City, 2012

Acrylic on Wood
102 x 49 cm (40.15 x 19.29 in)

Estimate \$4,000 - \$6,000

Courtesy Lee Baker



ITEM 10

TOM LEIGHTON B. 1981

Beijing Canopy II, 2010

Digital C-Print mounted on Perspex
122 x 122 cm (48 x 48 in)
This work is from an edition of 5.

Estimate \$12,000 - \$14,000

Courtesy Cynthia Corbett Gallery



ITEM 11

028
REOPENING 2012

JEN STARK B.1983

Purple, 2009

Hand-cut Paper on Wood
50.8 x 50.8 x 10.16 cm (20 x 20 x 4 in)

Estimate \$4,000 - \$6,000

Courtesy Cooper Cole Gallery



ITEM 12

MICHAEL CRAIG-MARTIN B. 1941

Untitled (workfork), 2011

Acrylic on Aluminium
122 x 122 cm (48 x 48 in)

Estimate \$55,000 - \$75,000

Photo by Dave Morgan
© 2012 Michael Craig-Martin
Courtesy Gagosian Gallery



ITEM 13

030
REOPENING 2012

TOMOKAZU MATSUYAMA B. 1976

Mr. Alpha-Beta, 2012

Acrylic on canvas
139.7 x 139.7 cm (55 x 55 in)

Estimate \$12,000 - \$16,000

Courtesy the artist and Gallery Wendi Norris



ITEM 14

RYAN MCGINNESS B.1972

*Meta-passé Toys of the
Hippie Generation, 2012*

Acrylic on linen
182.88 x 182.88 cm (72 x 72 in)

Estimate \$65,000 - \$85,000

Courtesy Ryan McGinness Studios, Inc.



ITEM 15

032 | **MATT MIGNANELLI B. 1983**

REOPENING 2012 | *Supremacy II*, 2012

Gloss and matte black
enamel on canvas
101.5 x 76 cm (40 x 30 in)

Estimate \$5,000 - \$7,000

Courtesy Matt Mignanelli



ITEM 16

JAMES HUGONIN B.1964

Three Fluctuations in Contrary Rhythm (Parts I-III), 2009

Three 30-colour screenprints
on Somerset T.S. 410gsm
Ed. 22/45
Image size: 74.8 x 65.4 cm (29.4 x 25.7 in)
Paper size: 97.7 x 83.7 cm (38.4 x 33 in)
This work is from an edition of 45

Estimate \$10,000 - \$12,000

Courtesy Ingleby Gallery



034
RANCINAN 2012
GÉRARD RANCINAN B. 1953

Le Banquet des Idoles (I), 2012

Argentique print mounted on
Plexiglas in artist's frame
Artist's proof
180 x 300 cm (70.8 x 118.1 in)
This work is unique in this form.

Estimate \$50,000 – \$70,000

Courtesy Gérard Rancinan



ITEM 18

MATT COLLISHAW B.1966

*Last Meal on Death Row,
Texas (Martin Vegas), 2011*

C-Print framed with Red Grandis timber,
rubbed back with black lacquer finish
64 x 46 cm (25.2 x 18.11 in)
This work is from an edition of 5 + 1 A/P.

Estimate \$14,000 - \$16,000

Courtesy Blain Southern Gallery



ITEM 19

036
REOPENING 2012
PEDRO MATOS B. 1989

*I Will Have What
She's Having*, 2012

Oil on Canvas
160 x 160 cm (63 x 63 in)

Estimate \$10,000 - \$12,000

Courtesy Pedro Matos



ITEM20

RALF KASPERS B.1964

Summerland III, Tokyo, 2011

Lambda Print mounted on Diasec
267 x 200 cm (105.12 x 78.74 in)
This work is from an Edition of 5

Estimate \$50,000 - \$70,000

Courtesy Ralf Kaspers



KAI AND SUNNY

REOPENING 2012

Sycamore Seed, 2012

Hand-pulled 2-colour Screen Print
on 100% Cotton 420gsm Somerset
Tub-sized Satin with Black and White Glitter
Artist's proof
120 x 170 cm (47.2 x 66.92 in)
This work is from an Original Edition of 3

Wild Flower, 2011

Hand-pulled 2-colour Screen Print
on 100% Cotton 420gsm Somerset
Tub-sized Satin with Black and White Glitter
Artist's proof
120 x 170 cm (47.2 x 66.92 in)
This work is from an Original Edition of 3

Framed in Oak stained black
Sold as a diptych.
Estimate \$5,000 - \$7,000

Courtesy Kai and Sunny



ITEM22

MARC QUINN B.1964

Under The Volcano
(Izalco, El Salvador), 2012

Oil on Canvas
169 x 271 cm (66.53 x 106.69 in)

Estimate \$200,000 - \$250,000

Courtesy Marc Quinn



ITEM 23

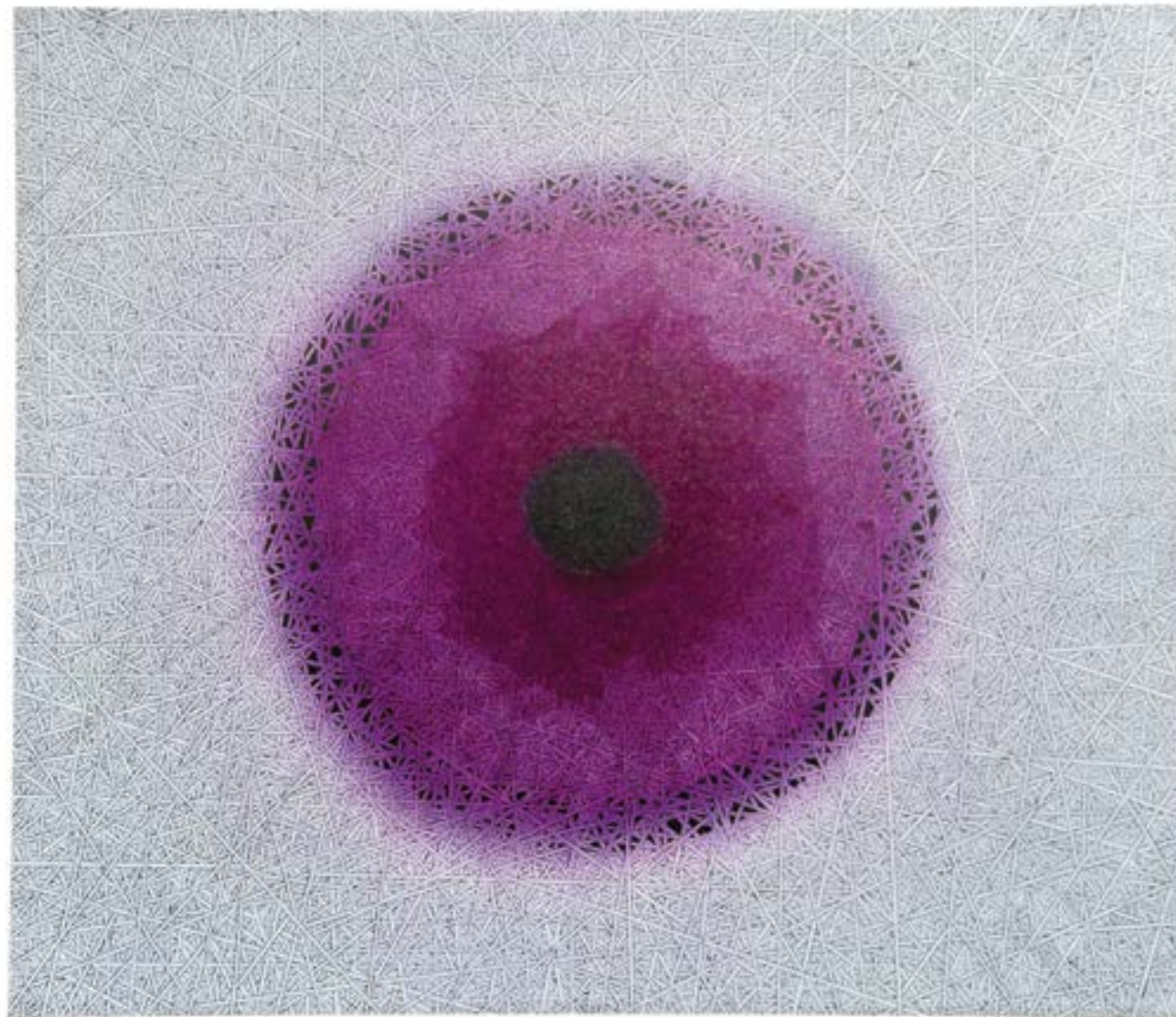
040
MARK ANDREW WEBBER B.1984

Paths of Light, 2012

3-colour Linocut Print on Paper
109.22 x 99.06 cm (43 x 49 in)
This work is unique in this form.

Estimate \$3,000 - \$5,000

Courtesy Mark Andrew Webber



ITEM24

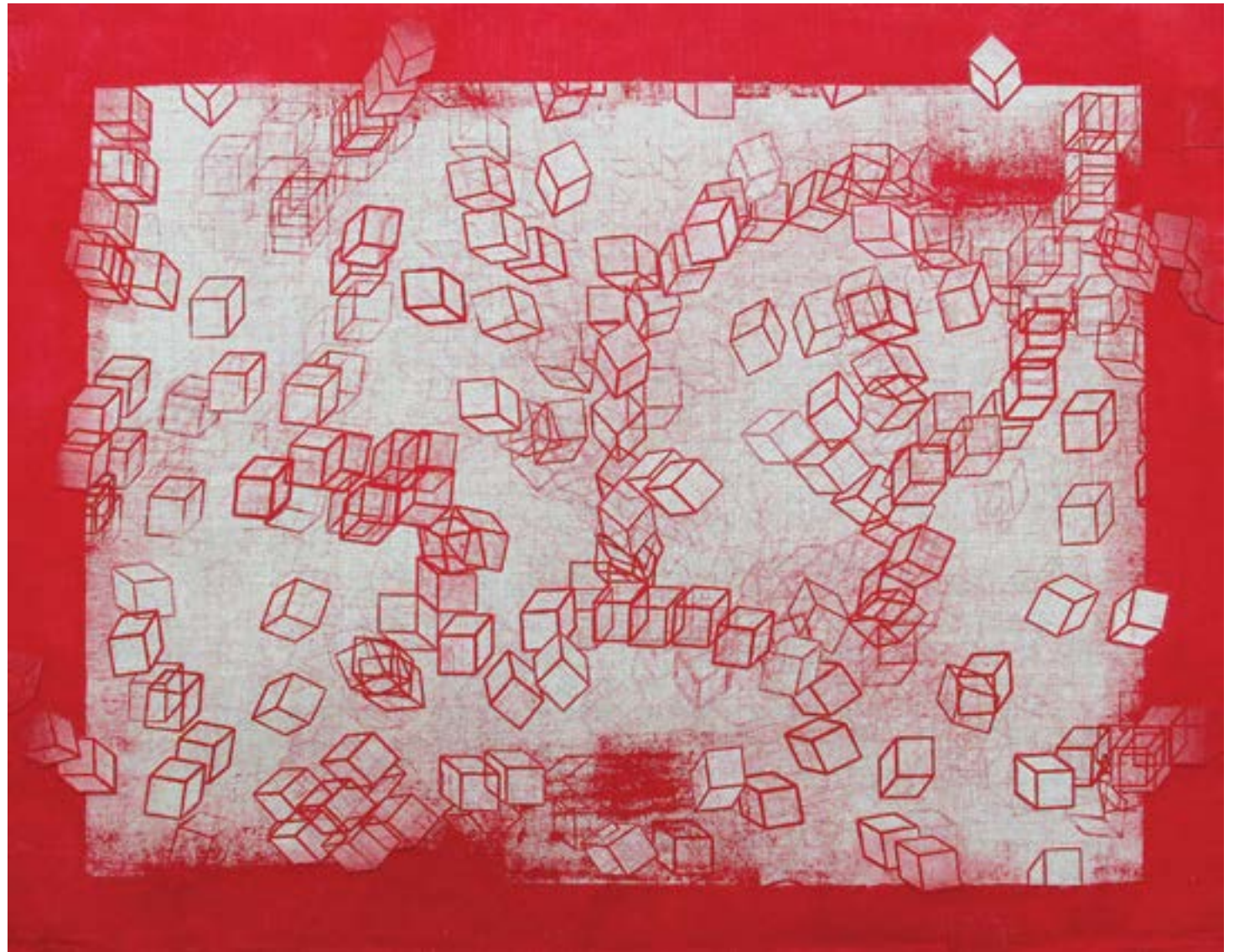
AKAASH NIHALANI B. 1986

Red II, 2009

Acrylic and Cut Canvas on Canvas
54.6 x 69.85 cm (21.5 x 27.5 in)

Estimate \$1,500 - \$3,000

Courtesy Akaash Nihalani



RYAN GANDER B. 1976

*Flashes of Beautiful Thinking –
22 September 2012, 2008*

One crystal ball containing a laser-etched image of a piece of paper on which the artist was about to draw when it slipped from the table and fell to the floor. Shown together with a sealed light-proof black polythene bag containing a number of 'page-per-day' calendar pages for the birth date of the work.

Crystal ball: 15 x 15 cm (5.9 x 5.9 in)
Polythene bag: 15 x 21 cm (5.9 x 8.27 in)
This work is from an edition of 10 + 1 A/P.

Estimate \$7,000 - \$10,000

Courtesy Ryan Gander



ITEM26

JUERGEN TELLER B.1964

Cat Smoking, Hydra, 2012

C-Type Print
40.64 x 50.8 cm (16 x 20 in)

Estimate \$7,000 - \$10,000

Courtesy Juergen Teller



YASMINE ARMAN

*Keith Haring, Robert Mapplethorpe,
Jonathan Larson, Michel Foucault,
Pedro Zamora, Arnie Zane, 2012*

PHOTO-GRAPH consisting of 6 Argentic prints
mounted on black Sintra in an artist's frame
132 x 167.5 cm (52 x 66 in)
This work is unique in this form.

Estimate \$10,000 - \$12,000

Courtesy VickyDavid Gallery
Photo by Sebastian Rodriguez-Larrain



ITEM28

JIM HOUSER B.1973

FLAKES, 2012

Acrylic/Collage on Canvas
60.96 x 60.96 cm (24 x 24 in)

Estimate \$2,000 - \$4,000

Courtesy Jim Houser



ITEM 29

SWOON B.1977

#36 Alden (*paper on lino*), 2012

Screenprint on paper with coffee
stain pasted to linoleum
36.83 x 60.96 cm (14.5 x 24 in)

Estimate \$1,500 - \$3,000

Courtesy Swoon



ITEM 30

DAVE WHITE B.1971

RE:DEFINE Live Painting, 2012

Oil on Linen
250 x 200 cm (98.42 x 78.74 in)

Estimate \$20,000+

This work will be painted
live on the night of the
RE:DEFINE gala event.

Image shown for illustration
purposes only and not
representative of the
actual painting.



RE:DEFINE

ARTIST PROFILES

YASMINE ARMAN

www.yasmine-arman.com



Yasmine Arman was born in New York and was raised between there and France.

Her interest in photography was sparked one summer, when her father gave her a black-and-yellow 'kid-proof' camera. She first brought her strong inherent artistic sensibilities to a series of intimate portraits of her friends, revealing an innate ability to capture their essence with intensity and sensitivity, but above all expressiveness.

Arman's interest in photography has always been closer to its original definition as 'drawing with light' than simply capturing moments.

She has developed a unique series of 'photo-graphs', created through applying light by hand directly onto photographic paper in a dark room, using the stylus to create new expressions. She has also combined analog and digital in a series of works in which her line drawings are projected against nudes, balancing her interest in the human figure while maintaining the unique integrity of the original composition.

Arman has been featured in a number of group shows, with prominent collectors both in the United States and Europe acquiring her work.

CHARMING BAKER

www.charmingbaker.com



"I like to take people down a path to a place they least expect to be," says Charming Baker of his deep fixation for seduction and discomfiture.

Baker is seen as one of the brightest stars on the British art scene. His divergent techniques are a collision of the very traditional and the wholly unconventional.

Primarily a painter, he draws, paints, drills, saws and (occasionally) shoots his artwork. The results are deftly decanted concoctions of familiarity and unease. "It's just a way of bringing another language into my work," says the artist of his unorthodox methods. That language now extends to sculpture.

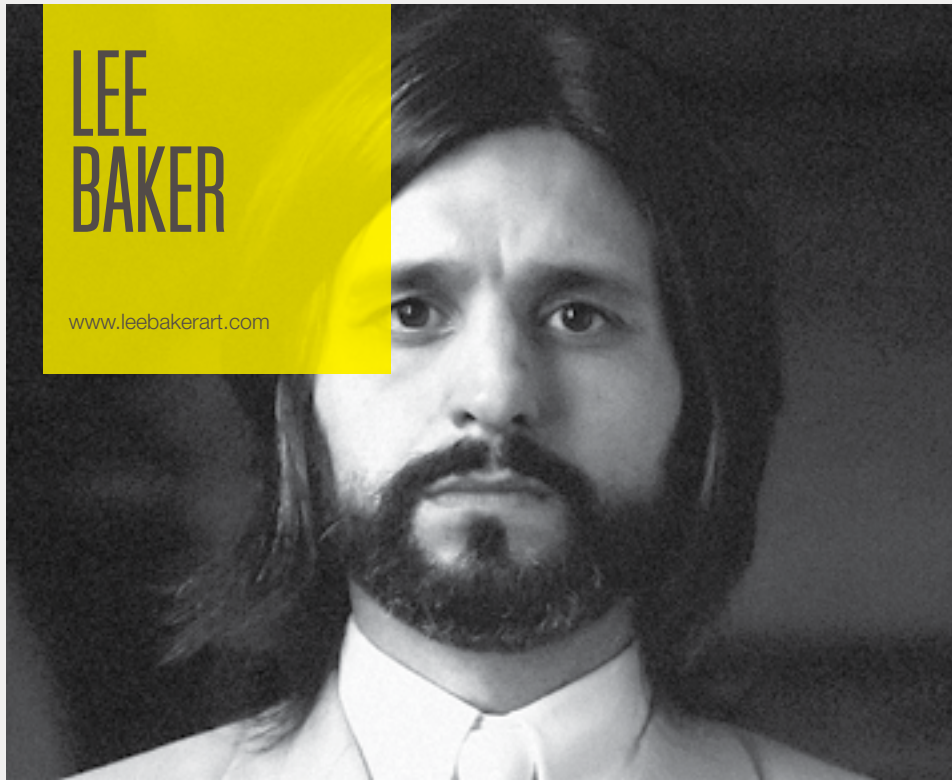
Baker lives and works in London. He was brought up in army camps around the world, eventually settling in Yorkshire, England. Graduating from London's Central St Martins College of Art, he later returned as a lecturer.

Baker now operates outside the normal gallery system, producing self-funded exhibitions. His sell-out shows in London, LA and New York have attracted the attention of some of the art world's most prominent collectors including Damien Hirst, Philip Niarchos, Alberto Mugrabi and Aby Rosen.

"Baker's juxtaposition of nostalgia with sex and death is grown-up and playful," noted the London Evening Standard of Baker's 2011 London exhibition. "His work is hauntingly beautiful and intentionally bothersome."

LEE BAKER

www.leebakerart.com



Brighton-based Lee Baker (b. London, 1969) studied Fine Art at Newcastle University.

As a developing artist in the 90's, Lee produced numerous site-specific pop installation pieces across the UK, drawing on his experience customizing cars and a fascination with manga. His interest in large-scale installations subsequently led to a further development of his skills, working as a scenic artist for The National Theatre and English National Opera.

Having honed his craft as a multidisciplinary commercial artist, Lee's fine art practice explores stark visions of the indestructible meta-city against the indiscriminate forces of nature.

Drawing on the narrative and scenic elements of film's such as Katsuhiro Otomo's Akira, Disney's Tron and further exploring the idea of a self aware 'thinking' city, developed in films such as 'Tekkonkinkreet' and

Makoto Shinkai's 'A Place Promised in our Early Years', Bakers' painstaking large-format paintings and installations utilize vivid colour and extreme perspective to 'build' meta-cities and architectural environments, often set against a stormy backdrop of ashen clouds, pending night and potential destruction.

Recent exhibitions include: Spectra I, LondoNewcastle (2011); Thames To Tama, METAL (2011), TokuChan Likes Colour, TAP (2011), The Future Tense, The Future Gallery (2010), 'Life In 2050', Proud Central (2010).

SCOTT CAMPBELL

www.scottcampbelltattoo.com



Louisiana-born Scott Campbell is known throughout the world as being one of the most talented hands in the world of tattooing.

After abandoning a career as a biochemist at the University of Texas, he fled to San Francisco, and began tattooing. He learned the craft at Picture Machine, one of the oldest shops in California, rich with stories and nicotine stained flash on the walls from its heyday in the 60's and 70's.

He owns and operates the legendary Saved Tattoo in Williamsburg, Brooklyn, whose client list includes New York's art and design elite, fashion designers such as Marc Jacobs, and celebrities including Heath Ledger, Josh Hartnett, Orlando Bloom, Helena Christensen, and Penelope Cruz. In recent years, he has gained much acclaim from fine art communities worldwide

for his work in mediums other than skin, including intricately carved sculptures made out of US currency, a series of watercolor paintings based on his experiences during a 6 week stay in a maximum security prison in Mexico City, and graphite drawings done on the insides of eggshells.

Campbell has only shown in galleries for a few years, but his work is already seen in some of the most revered collections and museums worldwide. He is celebrated as one of the brightest new voices in the New York art scene.

MAT COLLISHAW

www.matcollishaw.com



Over the past decade, Mat Collishaw's work has been exhibited in numerous solo shows around the world, including Camden Arts Centre, London (1995); Life/Live, Musée d'Art Moderne de la Ville, Paris and The Brooklyn Museum, New York (1998); Galeria d'Arte Moderne, Bologna, Italy (1999); Museum of Contemporary Art, Warsaw (2000); Mat Collishaw, Art & Public, Geneva (2004); Hysteria, Freud Museum, London (2009); Retrospectre, BFI Southbank, London (2010); Creation Condemned at Blain|Southern London (2010) Magic Lantern, Victoria & Albert Museum (2010) and most recently Vitacide, Tanya Bonakdar Gallery, New York (2012).

Group exhibitions include: Freeze, Surrey Docks, London (1988); Institute for Cultural Anxiety, ICA, London (1994); Brilliant! New Art From London, Walker Art Centre, Minneapolis (1995); Sensations, Royal Academy of Art, London (1996); The Edge of Awareness, P.S.I, New York (1998); New Blood,

Saatchi Gallery, London (2004); In the Darkest Hour There May Be Light, Serpentine Gallery, London (2006). In 2011 Mat Collishaw's Bullet Hole was exhibited in the 12th International Istanbul Biennial and Sordid Earth, as part of Ron Arad's Curtain Call project at the Roundhouse in London. In 2012 Mat was part of Made in Britain, Contemporary Art from the British Council Collection, Benaki Museum, Athens and Out of Focus: Photography, Saatchi Gallery London.

Other Criteria and Thames & Hudson have published books with Collishaw's work, and the Victoria & Albert Museum recently commissioned Collishaw with a monumental onsite project, Magic Lantern, which – installed in the cupola above the entrance – appropriates the very architecture of the V&A creating a beacon of light, complete with an attendant swarm of moths, and visible across London during the winter months of 2010 - 2011.

MICHAEL CRAIG-MARTIN

www.michaelcraigmartin.co.uk



Michael Craig-Martin was born in Dublin in 1941. He grew up in the United States and studied Fine Art at the Yale School of Art and Architecture, where he received his BA in 1963 and his MFA in 1966.

His first solo exhibition was at the Rowan Gallery, London in 1969. His best known works include An oak tree (1973), in which he claimed to have changed a glass of water into an oak tree; his large-scale black and white wall drawings; and his more recent intensely coloured paintings, sculptures, installations, and public commissions, including the DLR station at Woolwich Arsenal, the Laban Dance Centre in Deptford, the Radcliffe Childrens Hospital in Oxford.

He was a professor at Goldsmith's College from 1974-1988 and 1994-2000, and a significant influence on the emerging British artists.

Solo exhibitions include "Michael Craig Martin: A retrospective", Whitechapel (1989); "Signs of Life", Kunsthaus Bregenz, Austria (2006); "Michael Craig Martin", Irish Museum of Modern Art (2006-2007); "Michael Craig Martin", NewArtCentre, Roche Court, Wiltshire (2011); together with site specific installations; "Private space, public space" Centre Georges Pompidou, Paris; "Always Now," Kunstverein Hannover; "ModernStarts: Things, Museum of Modern Art, New York.

Craig-Martin lives and works in London.

CHUCK ELLIOT

www.transistor.uk.com



Chuck Elliott's practice is concerned with a fluid investigation of colour, movement and light.

Entirely computer generated, these organic, free-form shapes are cropped, recoloured and enhanced as if editing in a camera view.

Hovering between printmaking and photography, Chuck is endeavoring to push back the boundaries of traditional printmaking, with direct digitised drawing and a fluid use of dynamic colour spaces and captured light.

RYAN GANDER



Ryan Gander is an artist living and working in London and Suffolk.

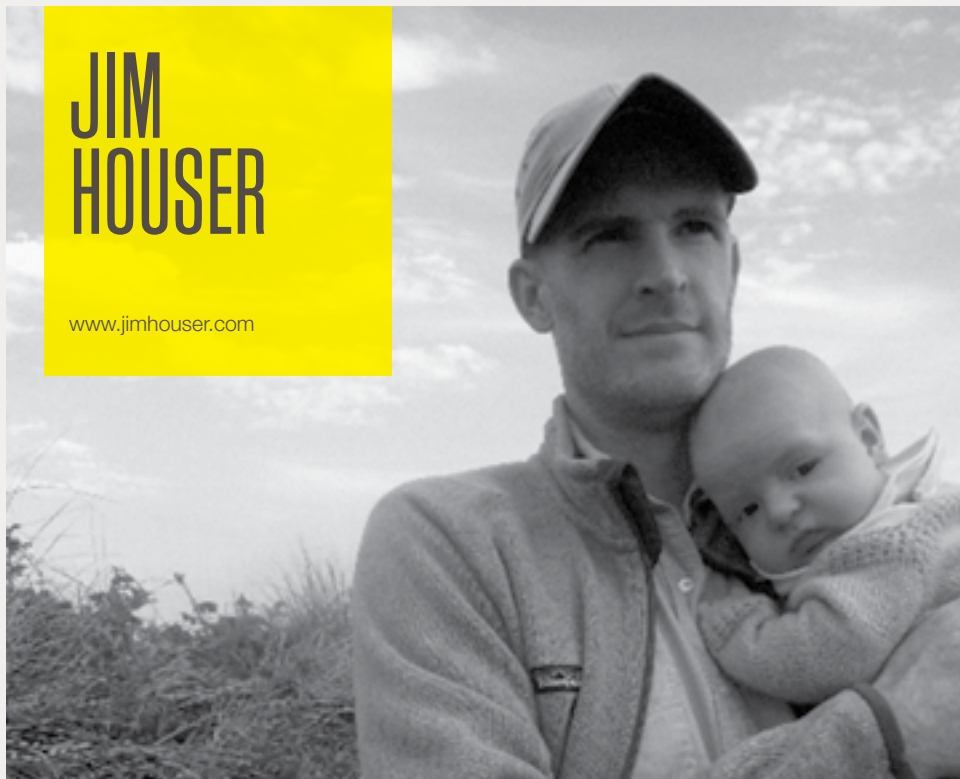
He studied at Manchester Metropolitan University, UK, the Rijksakademie van Beeldende Kunsten, Amsterdam, NL and the Jan van Eyck Akademie, Maastricht, NL. Recent projects include dOCUMENTA (13), Kassel, DE; Locked Room Scenario, Commissioned by Artangel, London, UK; Really Shiny Things That Don't Mean Anything, Trybuna Honorowa, Plac Defilad, Muzeum Sztuki Nowoczesnej w Warszawie, Warsaw, PL; ILLUMInations at the 54th International Art Exhibition of the Venice Biennale; Intervals at Solomon R. Guggenheim Museum, NYC, US; The Happy Prince, Public Art Fund, Doris C. Freedman Plaza, Central Park, NYC, US.

Recent solo shows have been held at Lisson Gallery, London, UK; gb agency, Paris, FR; Fondazione Morra Greco, Napoli, IT; Maison Hermès, Tokyo, JP; Jörg Johnen Galerie, Berlin, DE; Annet Gelink Gallery, Amsterdam, NL; Okinawa Prefectural Museum, Okinawa, JP.

A monograph by the artist, entitled Catalogue Raisonné Vol: 1 has been co-published by JRP|Ringier and Thea Westreich/Ethan Wagner Publications.

JIM HOUSER

www.jimhouser.com



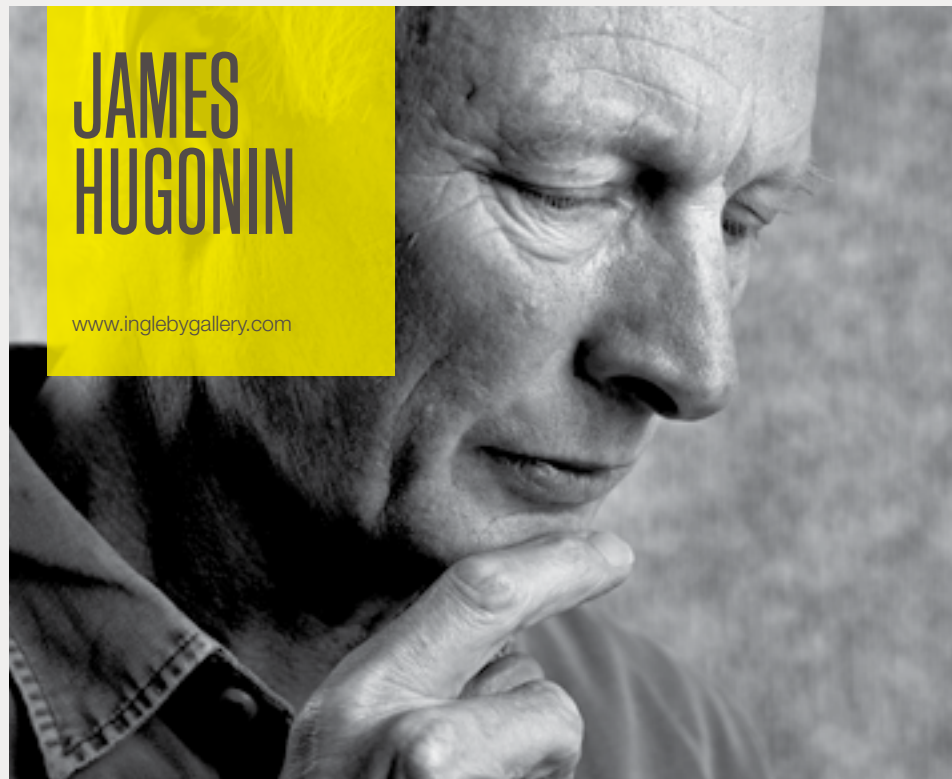
Jim Houser was born in 1973 in Philadelphia, Pennsylvania, the city where he currently resides.

He is a self-taught artist and a founding member of the Philly-based artist collective Space1026. Houser's installations create a mapping system, cataloguing his psychological states over the course of a particular period of time. His work explores the cadence of speech, science and science fiction, sickness and disease, plants and animals, time travel, ghosts, the art of children, secrets, radio, codes and code breaking.

Houser's collages, paintings and installations have been exhibited in museums and galleries throughout the United States, Europe, Australia and Brazil. His work is included in the permanent collection of the Philadelphia Museum of Art. Recently, Houser released a self-titled vinyl record of instrumental music composed to accompany his installations

JAMES HUGONIN

www.inglebygallery.com



James Hugonin's paintings are composed of marks of close toned colour with an underlying grid, each mark shifting slightly from its neighbour and building to a rhythmic whole.

These are deeply subtle paintings with an understated clarity: quietly musical and filled with a kind of contained light that relates keenly to the place in which they are made - the Cheviot hills in the North East of England.

There is a slow and deliberate colour notation that forms an integral part of the making of each work. As Michael Harrison (former Director of Kettle's Yard, Cambridge) has observed, "the paintings carry with them that pace, that slowness, that sense of time. They ask us to slow down, and to look, and to settle as we would to listen to a piece of music, allowing time to take effect - to acknowledge that, for all their quietness and stillness, our relationship to them is one of continual change".

A selection of Hugonin's work was shown at the De La Warr Pavilion, Bexhill-on-Sea which then toured to BALTIC, Gateshead. In 2009, Hugonin published his ambitious suite of three 30-colour screenprints, 'Three Fluctuations in Contrary Rhythm'.

This represented a significant new body of work by the artist and encouraged him to explore new ways of developing his practise. In 2010, Hugonin was commissioned to produce a stained glass window in St John's Chapel in Northumberland and a major exhibition of his work was held at the Ingleby Gallery, Edinburgh.



Ralf Kaspers was born 1957 in Düsseldorf where he studied photography and graphic arts at the Academy of Visual Arts.

Kaspers uses a visual language that emphasizes the qualities of atmosphere, color and aura over a purely factual photography. Nature and culture, documentation and aesthetic construction are interlinked to create pictorial spaces where, more often than not, the documentary character of the image is an intended illusion and where digital manipulation becomes a 'natural' means of image generation. Based on this process, Kaspers has created large-format urban motifs, often shot in New York but also in Moscow, Tokyo, Berlin and Dusseldorf, in parallel to natural, or seemingly natural, landscapes shot in Europe, Asia and Africa.

In recent years Kaspers has continually extended his artistic themes in the area of photography and has interrelated them in terms of aesthetics and contents. The world and its cultural contexts, manifested in natural or urban landscapes and objects, presented as single objects at the center of the image, or digitally organized in serial order to represent symbols for the cycle of life and death, form the starting point for Kaspers' artistic field of photographic perception and creation.

Recent solo exhibitions include the Moscow Museum of Modern Art.



Japanese-born, New York-based artist Tat Ito present a unique world of cultural and philosophical investigations through variable perspectives.

Woven through a refined sense of symbolism and humor, the witty and masterfully executed compositions mix societal, political, religious, and personal references. An artist whose adoration of the ordinary becomes enigmatic, recording our times and lives in a soberingly honest yet playful manner, the singular blend of Ito's artistic repertoire lends his art a captivating idiosyncrasy.

Tat Ito, currently living and working in New York City. His exhibitions include Solo Exhibitions: Shinagawa Shinju, Above Second Gallery (2012); Memento Mori, Joshua Liner Gallery, New York (2011); Yosemite and San Francisco Landscape, Nagoya Citizen's Gallery, Nagoya, Japan (2010)

Selected group exhibitions of my work include: Habitat, Foothills Art Center, Golden, CO (2011); Single Fare 2, Sloan Fine Art, New York (2011); I've Got a Secret, The Forbes Galleries, New York (2011); From Kojiki to Modern Heroism (with Hiro Kurata), Joshua Liner Gallery, New York (2010); Old School, Jack the Pelican, Brooklyn (2009).

KAI & SUNNY

www.kaiandsunny.com



Kai and Sunny are an art duo who have won numerous accolades, including a D&AD award in illustration/design. Their intricate, natural and sometimes sinister style has earned them commissions for David Mitchell book covers, art direction for Alexander McQueen and advertising campaigns for global brands including Adobe and Apple.

Currently the duo are exploring natural forms with large-scale monotone works through print making. Their latest work demonstrates a continuing intricacy and connection with nature but also shows a developing maturity and intensity. Their last solo show was entitled 'The Flower Show' illustrating the complexity of the flower. The pair worked with David Mitchell who wrote a short story entitled 'The Gardener' for the exhibition.

"The stuff in between is what we are trying to show. The stuff we can't actually see. We are all trying to connect we are all fragile beings" Kai Clements

They are represented by Stolen Space Gallery in London. Recently their work has been included into the Victoria & Albert Museum print archive collection - London. Later this year they have been asked by The Guardian to give a talk on their work.

Recent Solo shows include Stolen Space gallery - London 2009, 2010, 2011, Haunch of Venison - London 2010 (group show), Art Basel - Miami Beach 2011 and Daydreaming with... Hong Kong Edition - Hong Kong 2012 (group show).

TOM LEIGHTON

www.tleighton.com



The photographs of Tom Leighton engage with the urban landscape.

By digitally altering photographs, Leighton examines how our landscapes and the buildings within our cities reflect our past, present and futures. Key works will see Leighton juxtapose Classical architecture against today's financial sector as he examines how much the world has changed.

Tom Leighton graduated from the Royal College of Art in 2006 and is represented by The Cynthia Corbett Gallery. His work has been acquired by Museum & Foundation collections as well as a number of corporate and private international collections. Tom Leighton was selected by The Annenberg Space for Photography in LA to take part in the "Digital Darkroom" Slideshow Night May 2012. This was an exciting exhibition of photography that celebrates a new array of images from a group of photographers who

specialize in either digital or manual photo manipulation. Collections include AT&T Corporate Collection, USA; Prudential Douglas Elliman, NYC; The Sandor Family Collection, Chicago; MuCEM (French National Museum of European and Mediterranean civilizations); William Blair & Company, Chicago/London; The UBS Art Collection & The Victoria and Albert Museum, London.

The Cynthia Corbett Gallery presents in London Collective View 2012 solo exhibition of new works by Tom Leighton 24th September – 6th October 2012.



PEDRO MATOS

www.pedromatos.org

Pedro Matos, 23 years old, born 1989 in Santarem Portugal, started painting at the age of just 16.

Pedro studied Painting and Fine Art at the Faculty of Fine Art – University of Lisbon and Ar.Co Art Centre Lisbon before moving to live in London where he studied at Central St Martins College of Art and Design.

Pedro's work has been exhibited in galleries and museums worldwide, including the University of Arizona Museum of Art, Phillips de Pury London, WhiteWalls Gallery San Francisco, Carmichael Gallery Los Angeles and Thinkspace Gallery Los Angeles.

Pedro's first solo exhibition was at the Montana Gallery, Lisbon "Reality Show" and recently he was invited to show his work in the "City of Fire" group show in Los Angeles, as well as having a sell-out solo show at Ivory&Black in London.

At the age of just 23, Pedro is one of London's youngest and brightest up-and-coming contemporary fine art talents.

Originally heavily influenced by skateboarding and graffiti Pedro Matos works in a very figurative photorealistic style to produce some sensitive and highly skillful paintings, showing a natural talent and maturity well beyond his years.



TOMOKAZU MATSUYAMA

www.matzu.net

Working in various mediums such as painting, sculpture to installations, Tomokazu Matsuyama makes works that possess great charm and vivacity, a result of the artist's sensitivity to his cultural roots combined with a distinctive contemporary playfulness.

Born in Japan and later immigrating to the United States, Matsuyama's bicultural upbringing spurred a questioning of national and individual identity, which today figures prominently in the style and subject matter of his paintings. Matsuyama embraces and updates the shifting, transformative aspect of the creature through his kaleidoscopic abstractions, simple figures, and faux naïf compositions.

Tomokazu Matsuyama was born 1976 in Tokyo, Japan, and currently lives and works in New York City. He received an MFA in Communications Design from Pratt Institute in Brooklyn. He has exhibited works in

galleries, institutions, and artfairs such as San Francisco Museum of Modern Art, Portsmouth Museum of Arts, Tufts University Museum, Frey Norris Gallery, Mizuma Art Gallery, Joshua Liner Gallery, Haunch of Venison Gallery, Art Hong Kong, Art Dubai, Pulse fair and among others. He recently had a museum solo exhibition at Katzen Arts Center in Washington DC.

His work can also be seen in the public collections of the Cosmopolitan Hotel Group (NV) and the Royal Family (Dubai, UAE), The Standard Hotel (Andre Balazs Group).

MARY MCCARTNEY

www.marymccartney.com



Mary McCartney (b.1969, London) started her career as a photographer in 1995. Since then Mary's work has concentrated on the world of portrait and candid reportage photography. Her style lies in finding a moment that gives us a new insight on the subject.

Mary's assignments have led to her work appearing in editorial titles such as Harpers Bazaar and Interview Magazine as well as high impact advertising campaigns for clients such as Adidas, Bucherer and Mandarin Oriental. "Mary is the new creative spirit behind Mandarin Oriental's He's/She's a Fan campaign, taking over from the late Patrick Lichfield."

In May 2000 Mary took the first official photographs of Tony and Cherie Blair with their newborn son, Leo. Mary has a number of pictures in the National Portrait Gallery Collection, along with a commission entitled 'Gay Icons', that was exhibited in the NPG in 2009.

Mary's first solo exhibition was in October 2004 entitled 'Off Pointe – A Photographic Study of The Royal Ballet After Hours' in which she was invited into the private world of the elite Corps De Ballet. This series of black & white photographs reveals an intimate unseen aspect of the world of ballet capturing the prestige and the chaos of life behind the scenes and the contrast between the sometimes gruelling, painful lifestyle of the dancers and their fairy tale performances.

Mary's time working in fashion photography led to her first American solo exhibition at the Goss Michael Foundation in Dallas, 2007. This body of work entitled "Playing Dress Up" shows a collection of photographs that chronicle a unique view, both on the catwalk and backstage, of the rarified world of high fashion.

Mary's book "From Where I Stand" a retrospective book of her photographic work to date was published in October 2010 by Thames & Hudson, with corresponding exhibitions in London (Hoppen Gallery) and New York (Staley Wise).

RYAN MCGINNISS

www.ryanmcginness.com



Ryan McGinness (born 1972) is an American artist, living and working in New York.

He grew up in the surf and skate culture of Virginia Beach, Virginia, and then studied at Carnegie Mellon University in Pittsburgh, Pennsylvania, as an Andrew Carnegie Scholar. During college, he interned at the Andy Warhol Museum as a curatorial assistant.

Known for his original extensive vocabulary of graphic drawings that use the visual language of public signage, corporate logos, and contemporary iconography, McGinness creates paintings, sculptures, and environments. Concerned with the perceived value of forms, McGinness is interested in assuming the power of this anonymous aesthetic in order to share personal expressions.

His work is in the permanent public collections of the Museum of Modern Art, The Metropolitan Museum of Art, Virginia Museum of Fine Arts, Museum of Contemporary Art San Diego, Cincinnati Art Museum, MUSAC in Spain, and the Taguchi Art Collection in Japan.

MATT MIGNANELLI

www.mattmignanelli.com



Matt Mignanelli lives and works in New York City and is a graduate of the Rhode Island School of Design.

His paintings have been exhibited extensively, with solo exhibitions in Glasgow, San Francisco, and Warsaw as well as in group exhibitions at Marianne Boesky Gallery, New York, Mark Wolfe Contemporary, San Francisco, Marianne Friis Gallery, Copenhagen, and the Goss-Michael Foundation, Dallas.

He was awarded a 2011 artist grant from Vermont Studio Center as an artist in residence. He's lectured at Parsons School of Design, New York, and his work has been reviewed in the San Francisco Examiner. Mignanelli exhibited at SCOPE New York, 2011 with Spinello Projects, and in September will exhibit at Art Copenhagen with Marianne Friis Gallery.

AKAASH NIHALANI

www.aakashnihalani.com



Aakash Nihalani is fast becoming recognized as one of the US's most striking emerging installation artists.

Celebrated for his ephemeral modifications of the urban landscape, the young Brooklyn-based tape specialist wields an abstract narrative of isometric shapes and flamboyant hues grounded in quiet irony and idiosyncratic precision. The fluidity of his simple, colorful style, which employs familiar shapes to produce unexpected visuals, initiates an inviting, living dialogue that traverses the chaos of city streets, the white walls of the gallery and the constancy of home.

Nihalani has built a global fan base by selectively placing his artwork on sidewalks and public spaces around New York. His squares, rectangles and cubes, which are constructed from strips

of instantly identifiable fluorescent tape, give three-dimensional qualities and a new, often humorous, perspective to the windows, doorways, cement pavement, floor tiles, chain-link fences, bricks, building contours and subway spaces within which they are embedded.

Nihalani completes all public art pieces on site with little to no advanced planning. His style readily adapts to the interior gallery space and into individual works of art, thereby escaping its customarily fleeting existence while continuing to fuse his aesthetic and conceptual objectives.



Parra is known to lovers of his work for the themes and motifs which have become unmistakable and distinctive trademarks of his style; curved 2 dimensional modern post-pop images, highly saturated colors, vibrant typographic hand-drawn letters and worlds inhabited by hybrid, bizarre, surreal characters.

Men with bird heads, fleshy and voluptuous women with round sensual bodies, mixed with texts and themes that span from sarcastic and introspective to ironic and bold, all the way to nonsensical.

Esteemed and popular in the independent scene in the beginning, he quickly became a recognized, creative, and eclectic artist worldwide.

Established brands have recruited Parra to customize limited edition products, his hands have illustrated important ad campaigns and his works have been shown in various solo exhibitions around the globe.

His last show was in the SFMOMA, his first in a U.S. museum.



Marc Quinn's wide-ranging oeuvre displays a preoccupation with the mutability of the body and the dualisms that define human life: spiritual and physical, surface and depth, cerebral and sexual. Using an uncompromising array of materials, from ice and blood to glass, marble or lead, Quinn develops these paradoxes into experimental, conceptual works that are mostly figurative in form.

Quinn's sculpture, paintings and drawings often deal with the distanced relationship we have with our bodies, highlighting how the conflict between the 'natural' and 'cultural' has a grip on the contemporary psyche. In 1999, Quinn began a series of marble sculptures of amputees as a way of re-reading the aspirations of Greek and Roman statuary and their depictions of an idealised whole. One such work depicted Alison Lapper, a woman who was born without arms, when she was heavily pregnant. Quinn subsequently enlarged this work to make

it a major piece of public art for the fourth plinth of Trafalgar Square. Other key themes in his work include genetic modification and hybridism. Quinn has also explored the potential artistic uses of DNA, making a portrait of a sitter by extracting strands of DNA and placing it in a test-tube.

Marc Quinn has exhibited in many important group and solo exhibitions internationally including Sonsbeek '93, Arnhem (1993), Give and Take, Victoria and Albert Museum, London (2001), Statements 7, 50th Venice Biennale (2003) and Gwangju Biennale (2004). Solo exhibitions include Tate Gallery, London (1995), Kunstverein Hannover (1999), Fondazione Prada, Milan (2000), Tate Liverpool (2002), Irish Museum of Modern Art, Dublin (2004), Groninger Museum, Groningen (2006) and MACRO, Rome (2006), DHC/ART Fondation pour l'art contemporain, Montréal (2007) and Fondation Beyeler, Basel (2009).

GÉRARD RANCINAN

www.rancinan.com



Born in the Bordeaux region Gérard Rancinan travels the globe, bearing first hand witness to events of historical importance.

With his imperious need to express himself, he delivers startling images of the contemporary world filtered through an ever-evolving aesthetic prism. His original perspective is applied both to real-life situations and authentic mises-en-scène, veritable simulacra of our world. His oeuvre is entirely original. He uses photography as a means of expression and commitment.

For Rancinan, photography is above all an instrument of thought, a militant perspective on our era. His approach is recognised by the world of contemporary art. Rancinan eschews conventional codes, preferring instead to travel a road, which, while not solitary, is certainly unique. Known throughout the world, Gérard Rancinan's works are displayed in the most prestigious international galleries and museums and feature in leading collections of contemporary art.

Rancinan is a Chevalier des Arts et des Lettres.

MICHAEL REISCH

www.hengesbach-gallery.de



Born 1964 in Aachen (D). Lives and works in Duesseldorf. Education: Gerrit-Rietveld-Academie, Amsterdam, Photography and Sculpture, Diploma (1986-1991), Kunstakademie Duesseldorf, Prof. Bernd Becher (1991).

Since 2012 Michael Reisch teaches Photography at Alanus Hochschule fuer Kunst und Gesellschaft, Alfter.

Solo-exhibitions at Staedtische Galerie, Iserlohn (2011), Kunsthalle Erfurt (2008), National Portrait Gallery Edinburgh, Staedtische Galerie, Wolfsburg, Fotoforum West, Innsbruck (2007), Fotomuseum Stadtmuseum, Munich (2005).

Group-exhibitions: Kunstraum Alexander Bürkle, Freiburg (2012), Residenzgalerie Salzburg (2011), Kunsthalle Emden, Hypo-Kunsthalle, Munich and Rotterdam (2010), Landesgalerie am Landesmuseum Oberoesterreich, Linz (2003).

His works are represented in the following collections: LACMA - Los Angeles County Museum of Art (USA), National Galleries Edinburgh (UK), EON AG Collection (D), West-LB Collection (D), UBS Collection (D), Collection Alexander Bürkle, Freiburg (D).

JEN STARK

www.jenstark.com



Jen Stark's (American, b. 1983) practice is based on the concepts of replication and infinity, her artwork echoing patterns found in nature.

The artist's optically and formally baffling sculptures, animations, and drawings are inspired by plants, outer space, and the theories of colour, math and science. Her creations incorporate a variety of materials which produce optically hypnotic effects not unlike traditional mandalas and sacred objects.

Her work can be found in the collections of The Museum of Contemporary Art (Florida), The Smithsonian, The West Collection, Microsoft Art Collection, Crystal Bridges Museum, amongst others. Jen Stark is represented by COOPER COLE in Toronto, Canada.

www.coopercolegallery.com

SWOON



Working under the artist name Swoon I have spent the last 13 years in an ongoing exploration of the relationship of people to their built environment.

I began my work as a classically trained visual artist and printmaker, and have an ongoing project of wheat pasting portraits to the walls of cities around the world. This initial impetus to create interventions in the urban landscape has continued to unfold in a variety of ways.

From 2006-2009 I constructed and navigated flotillas of rafts made from recycled materials down the Mississippi and Hudson rivers, and across the Adriatic Sea to Venice.

In 2010 and 2011 with the group Konbit Shelter, I constructed first a community center and then a home in earthquake devastated Haiti, bringing the creative process into the reconstruction effort.

Since 2008 I have been working independently and in collaboration with the collective Transformazium on community based projects in the town of Braddock, Pennsylvania.

I am currently working toward the construction of a musical house, entitled Dithyrambalina in New Orleans with New Orleans Airlift.

Alongside my community-based practices, I have a studio and installation-based practice of drawing, printmaking, and the construction of architectural installations and sculptures.

JUERGEN TELLER

www.juergenteller.com



Juergen Teller was born in Erlangen, Germany in 1964. He studied at the Bayerische Staatslehranstalt für Photographie in Munich, Germany. He has lived and worked in London since 1986.

In 2003, Teller was awarded the Citibank Prize for Photography, and, in 2007 was asked to represent the Ukraine as one of five artists in the 52nd Venice Biennale. He has also participated in group shows at the Museum of Modern Art in New York and Tate Modern in London. His work is held in a number of private and public collections, including Deutsche Bank AG, Frankfurt, Germany, Frans Hals Museum, Haarlem, Netherlands, Museum Folkwang, Essen, Germany and the Victoria & Albert Museum, London.

Teller's work in books, magazines and exhibitions is marked by his refusal to separate the commercial fashion commissions from his autobiographical work. His photographs have been published in influential

international publications such as W Magazine, i-D and Purple and has been the subject of solo exhibitions including The Photographers Gallery, London (1998), the Kunsthalle Wien, Vienna (2004) and the Fondation Cartier Pour l'art Contemporain, Paris (2006). Most recently, in April 2011, Teller exhibited Man With Banana at The Dallas Contemporary Museum and Touch Me at Daelim Contemporary Art Museum in Seoul, Korea.

For the past thirteen years, Juergen Teller has been working with Marc Jacobs on his advertising campaigns which were collated in the book, Marc Jacobs Advertising 1998-2009 by Steidl, currently in it's 2nd edition. Juergen has also had long collaborations with other designers over the years, including Helmut Lang, Yves Saint Laurent, Vivienne Westwood and more recently, Celine, after Phoebe Philo took the helm in Spring Summer 2010.

MARK ANDREW WEBBER

www.markandrewwebber.com



Born in 1984 and raised in Reading, UK, Mark Andrew Webber was diagnosed with Juvenile Chronic Arthritis at the age of 12, placing severe restrictions on his movement. Determined to not let his disability stand in the way of his passion for art and design, Mark endured several years of intensive medication and therapy, eventually leaving him well enough to study graphic design at Art College.

Webber's passion for typography combined with his love of printing and linocut, and in 2006 he created the first in a series of typographic city maps that have rapidly become his trademark.

Each map takes many months to create, from researching localized typographical styles and iconography, to painstakingly hand-carving the design from linoleum. Webber's most recent map of Paris took in excess of 800 hours to carve before being printed directly from the block, instilling each print

with a unique character, something the artist often explores with further mixed media hand finishing.

Webber's innate fascination with geometry, line and form are also evident within his pseudo op art series, where dense and seemingly impossible layers of lines meet more instantly familiar geometric shapes in works of dazzling complexity.

The recipient of a prestigious Silver Cube award from the Art Directors Club of New York and a member of the International Society of Typographic Designers, Webber has also completed high-profile commissions for a range of companies including Courvoisier, MTV and the cover of Crafts magazine, as well as exhibiting alongside graphic design luminaries such as Alan Fletcher, Margaret Calvert, Ken Garland, and Derek Birdsall.



Dave White is a contemporary British Artist who dedicates his work to celebrating popular culture and interpreting emotive issues.

Having studied Fine Art and graduating in BA (Hons) Fine Art (Painting) at Liverpool University, White has enjoyed success from the early inception of his career. Selected for the Northern Graduates exhibition at the Royal College of Art in 1994 and going on to exhibit in international art fairs with his initial animals series. A highlight of this period was the Blue Cross centenary celebration exhibition at Sotheby's London.

Since that time, White has created a series of collections and subject matters, reflecting popular culture. International exhibition highlights include the People's Square Exhibition Hall (Shanghai), Dia Art Centre (New York), Centre for Arts (Rotterdam), Art Basel (Miami), Truman Brewery (London) and the Liverpool International Biennial of Contemporary Art.

He has worked with numerous brands on high profile projects from Nike, Brand Jordan, Coca Cola, Kidrobot, Aol and more, all of which have work in their corporate collections.

White worked on the 'Project on Creativity' with Chuck Close at the New Museum of Contemporary Art, New York in 2010, where he has exhibited again this year in 'CNNCTD+100', showcasing the 100 cultural influencers of this generation with Cindy Sherman and Pharrell Williams.

In the last few months, White has launched his largest most successful solo exhibition in London, 'Natural Selection' inspired by endangered species. White also customized an old English phone box for the ambitious BT ArtBox project which appeared in Trafalgar Square this summer.

RE:DEFINE

SPECIAL
AUCTION

ITEM 01

Guide Price: \$10,000



DALLAS MAVERICKS MVP PACKAGE

A money-can't-buy lot for Maverick fans everywhere. This extraordinary package includes: Two tickets to a regular 2012/2013 season Dallas Mavericks game (no playoff or finals tickets.)

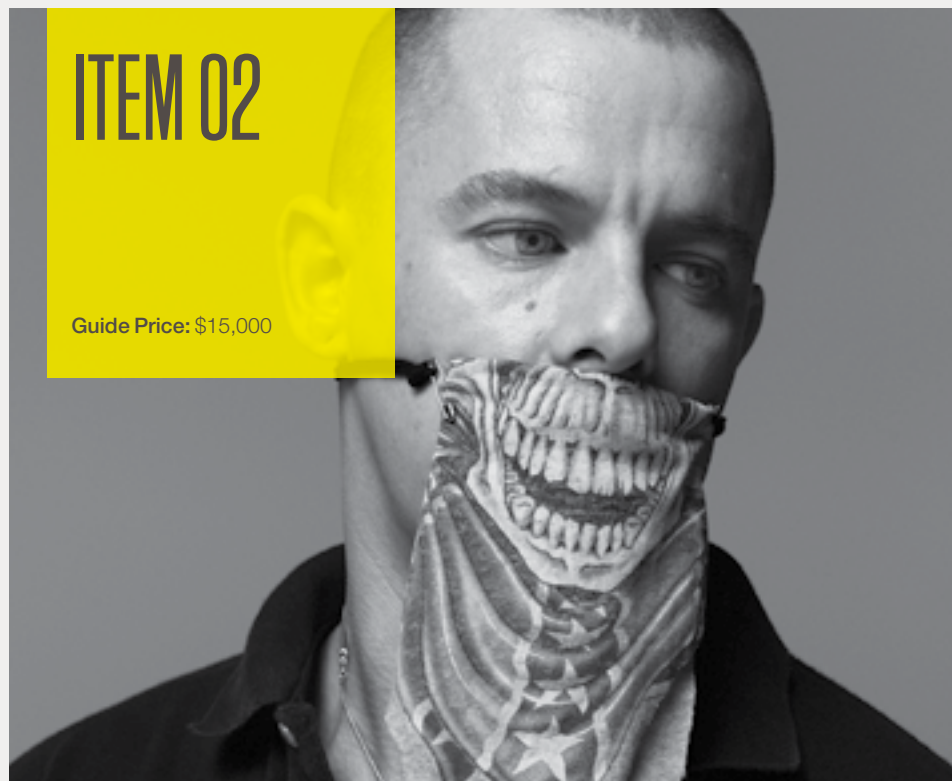
After the game meet MVP Dirk Nowitzki and join him for a private tour of the 2011 NBA Champions Dallas Mavericks locker room.

Winner will also receive a signed Dallas Mavericks jersey and signed game shoes worn by #41, Dirk Nowitzki.

Courtesy of Dirk Nowitzki and The Dallas Mavericks

ITEM 02

Guide Price: \$15,000



INEZ AND VINOODH PORTRAIT

Inez van Lamsweerde and Vinoodh Matadin are a Dutch fashion photographer duo. They have shot the likes of Lady Gaga and Alexander McQueen (pictured above) as well as high profile campaigns for Gucci, Chloé and Dior. With this fabulous lot, we're giving you the opportunity to have your very own photoshoot with the fabulous duo. You'll get prints of the photos and be immortalised in your very own piece of art.

Courtesy of Inez van Lamsweerde and Vinoodh Matadin
With special thanks to Ana Pettus

ITEM 03

Guide Price: \$30,000



PRIVATE CONCERT BY JAAP VAN ZWEDEN CONDUCTING A CHAMBER ORCHESTRA OF MEMBERS OF THE DALLAS SYMPHONY ORCHESTRA

In November 2011 van Zweden was named as the recipient of Musical America's Conductor of the Year Award 2012 in recognition of his critically acclaimed work as Music Director of the Dallas Symphony Orchestra and as a guest conductor with the most prestigious US orchestras.

Enjoy an exclusive private concert as maestro Jaap van Zweden conducts a chamber orchestra comprised of members of the Dallas Symphony Orchestra in your own home.

With thanks to: Dallas Symphony Orchestra and Jaap van Zweden.

Courtesy of Jaap van Zweden and The Dallas Symphony Orchestra

ITEM 04

Guide Price: \$15,000



MUNICH ART EXPERIENCE

You and one guest can escape to Munich, Germany, on a luxurious art trip. During your 4-day/3-night stay at the 5***** Leading Hotel of the World Bayerischer Hof in the center of Munich, the renowned art historian Karin Jenette-Martin, M.A. will guide you through the history of the former capital of the kingdom of Bavaria as well as its outstanding museum. A day trip will take you to the origins of the Blue Rider group (Kandinsky, Muenster et al) as well as its outstanding museums.

Highlights include a dinner in the home of Their Serene Highnesses Prince Christian and Princess Pilar of Salm-Horstmar, a dinner at the traditional Bavarian restaurant "Spaten an der Oper" on invitation of Lady Korinna von Kempfski

Rakoszyn as well as a visit to a private art collection. Full program available on request - and can be tailored to your interests (please email mtvrefdefine@gossmichaelfoundation.org)

Trip Restrictions: Valid for travel October 15, 2012 until September 15, 2013. Dates to be mutually agreed upon. Excludes holidays and major trade fairs. Included: program above, an airport transfer, transfers during cultural program, 4 full days private guidance by Karin Jenette-Martin, M.A., specials, Dinner at Spaten incl. soft drinks and beer, private dinner incl. wine and champagne, 2 lunches incl. soft drinks, 3 nights standard category at the Bayerischer Hof and 2 return flights from Dallas. Alcohol and gratuities are not included.

Courtesy of Lady Halina von Kempfski-Behrendt

ITEM 05

Guide Price Per Set: \$8,500

ROYAL
ASSCHER
Since 1854



ROYAL ASSCHER JEWELRY

When sixth generation diamantaire Lita Asscher and artspecialist Anna-Sophia van Zweden came together they combined their two biggest loves to make this unique, limited edition, one-of-a-kind collection.

The inspiration comes from brilliant and famous art pieces combined with the patented jewelry innovation: Stars. They consist of diamonds, sapphires and rubies encased in a fluid filled sapphire dome, which allows them to fall freely, like snowflakes in a snow globe. The result is cascading diamonds which emit light, fire and beauty as they move, like little falling stars; the effect is mesmerizing.

Damien Hirst / Darth Vader:

- Floating black diamonds on an 18kt white gold setting with black diamonds and black ceramic ring.
- Floating black diamonds on an 18kt white gold setting with black diamonds and black ceramic pendant on a gold chain.

Guide Price \$8,500

Guston:

- Floating white diamonds, rubies and pink sapphires on an 18kt rose gold setting and white ceramic ring.
- Floating white diamonds, rubies and pink sapphires on an 18kt rose gold setting and white ceramic pendant on a gold chain.

Guide Price \$8,500

Courtesy of Royal Asscher

RE:DEFINE

SILENT
AUCTION



NHA KHANH DRESS

Nha Khanh's designs focus on modern glamour, inspired by art, architecture and most importantly, nature. The designs are ethereal, meticulously constructed, and host an ease about them that allows for an effortless sensibility.

This is your opportunity to have a dress designed just for you by this esteemed designer. You'll meet at Khanh's studio and discuss your vision. The resulting dress will be a true one off, and something that will certainly stand out from the crowd

Courtesy of Nha Khanh



LEE BROOM CHAIR

Created especially for RE:DEFINE and a one off piece, the Bright on Bistro is an antique classic bentwood chair produced in England. The curves and flow of this piece have been accentuated with delicate red neon highlighting the silhouette of its iconic shape.

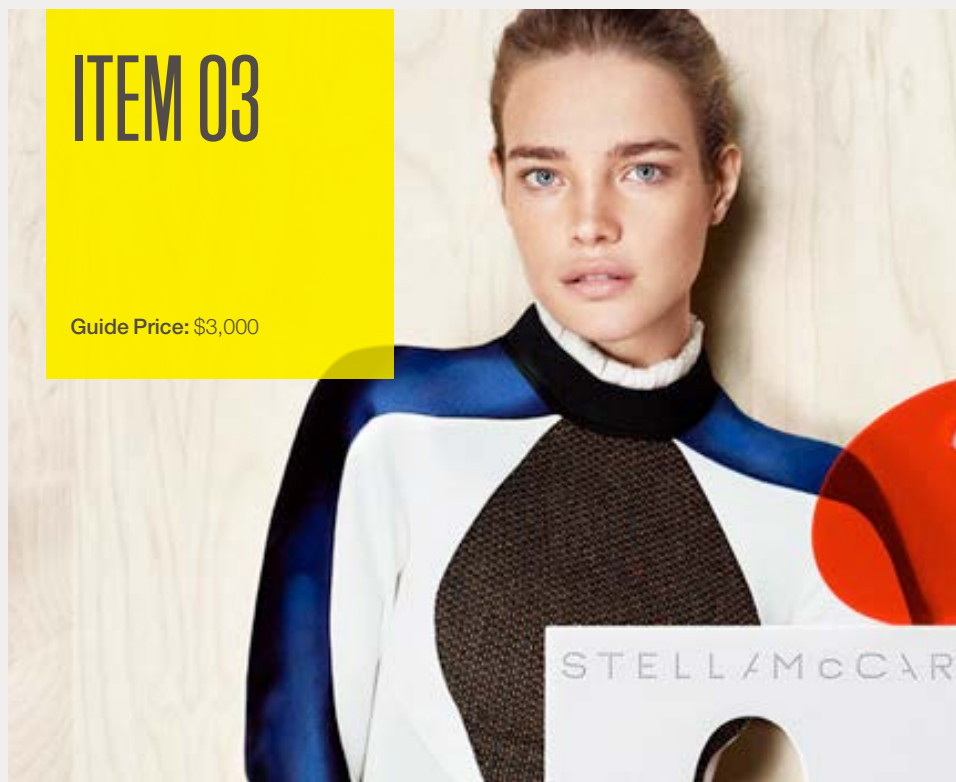
The chair has been left completely unrestored yet the added addition of the neon light gives the piece new life, without forgetting its journey.

www.leebroom.com

Courtesy of Lee Broom

ITEM 03

Guide Price: \$3,000



STELLA MCCARTNEY VIP VIEWING

The hottest ticket in town, this is the opportunity to bid on two tickets to the Spring or Autumn Stella McCartney Collection Presentation in New York City.

January 8th 2013 is the date for the Autumn 2013 Collection, and June of 2013 (exact date TBD) for the Spring 2014 Collection.

Courtesy of Stella McCartney

ITEM 04

Guide Price: \$8,000



EMA TICKETS FRANKFURT 11TH NOVEMBER 2012

Enjoy one of the greatest music shows on earth - the MTV EMA, in true VIP style. This year's event will take place in Frankfurt, Germany and is set to be jam-packed with fabulous performances from some of the hottest music acts around.

This VIP package includes 2 nights stay in premium accommodation, 2 VIP tickets to the show and VIP after-party.

Courtesy of MTV

ITEM 05

Guide Price: \$5,000



IC BERLIN SUNGLASSES

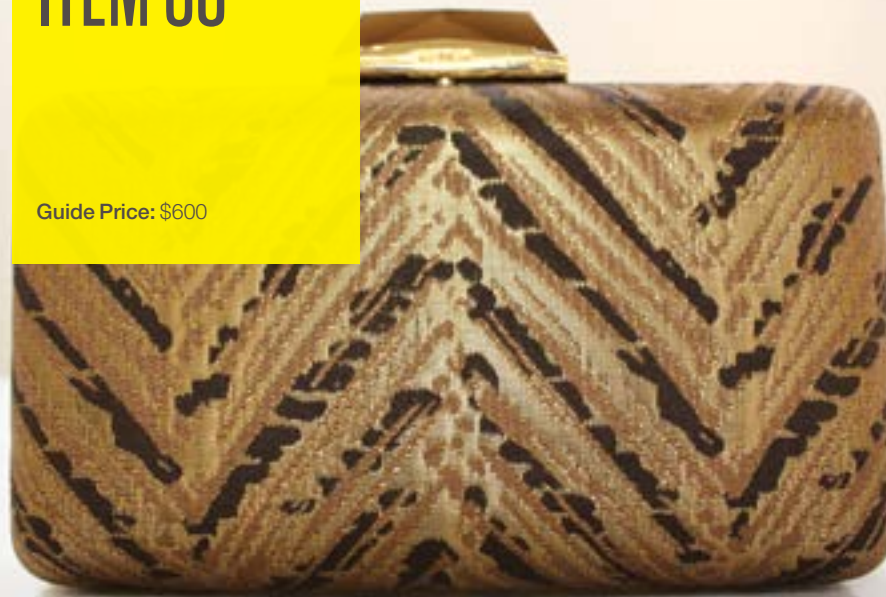
What could be more chic than a pair of custom-designed, hand-crafted gold sunglasses by hip German eyewear firm ic! berlin? A true one off, created just for RE:DEFINE.

ic! berlin is a niche company which like a David rebelled against the Goliaths of the eyewear business - the result... fantastically stylish frames that will make you look and feel fabulous.

Courtesy of ic!Berlin
With special thanks to Todd Hirsch

ITEM 06

Guide Price: \$600



KOTUR CLUTCH

A stunning gold crackle finish evening clutch bag with a gold statement clasp by KOTUR.

ABOUT KOTUR: Founded by former Tory Burch co-founder Fiona Kotur in 2004, KOTUR is about bridging the gap between modern technique and traditional craftsmanship. Her collections are comprised mainly of minaudieres and clutches.

Courtesy of Tootsies

ITEM 07

Guide Price: \$8,000



MTV MOVIE AWARDS LA
MAY/JUNE 2013

Experience the exclusive MTV Movie Awards 2013 show in ultimate VIP style. You and a guest will walk the red carpet brushing shoulders with the latest and greatest movie stars before taking your place in prime seats to enjoy an evening of international glamour and unforgettable performances.

Courtesy of MTV

ITEM 08

Guide Price: \$1,600



PYTHON HANDBAG

Susie Straubmueller's Secretos handbag is a unique, one-of-a-kind work of art. The hand-numbered and signed limited edition couture bag is a product of her control and understanding of color, lines and style. Each of her complex pieces are the product of exhaustive craftsmanship, intuitive artist vision and bold sense of style that is all her own.

As a world traveler, Susie artfully blends the vibrant colors, unique voices, and diverse influences she has absorbed during her journeys. From her childhood working with her mother to craft inspired clothing items for her family to her work as a model, stylist, make-up artist and designer, to her training at the hands of preeminent master leather workers, Susie has developed a style that is distinct, sophisticated, and functional while uniquely stylish.

Courtesy of Susie Straubmueller

ITEM 09

Guide Price: \$3,000



FLYWHEEL WORKOUT FOR YOU AND YOUR FRIENDS

Flywheel is the workout for you. The workout that offers a chance to achieve something more. To step up onto a custom engineered bike. And ride as hard as you dare.

An experience that lasts 45 minutes and includes climbs and descents, while working arms with weighted bars. Flywheel is an amazing escape that challenges your body and relaxes your mind.

Courtesy of Flywheel Sports
With special thanks to The Buzzell Company

You and 40 of your closest friends will experience the indoor cycling phenomenon with an exclusive spin party complete with an expert Flywheel instructor, a custom playlist curated by the in-house DJ and private stadium-style seating, making every seat in the house a good one.

ITEM 10

Guide Price: \$400



LIFE-IN-STYLE COLLAR

Throughout many posts on her blog www.life-in-travel.com fashion connoisseur Hanh Merriman designed many fashion pieces for her personal use. Readers of her blog asked her repeatedly when she would start her own line, so she was inspired to start the line "Life-In-Style".

The edgy yet elegant collar is the first piece that she debuted for a jet setter magazine spread. Hanh wanted to add that little extra something to her outfit.

Courtesy of Hahn Merriman

The "Life-In-Style" collar is made out of French lace and fine leather. Leave it up to your imagination to style it.

ITEM 11

Guide Price: \$3,500 - \$4,250



ROYAL ASSCHER JEWELRY

When sixth generation diamantaire Lita Asscher and art specialist Anna-Sophia van Zweden came together, they combined their two biggest loves to make this unique, limited edition, one-of-a-kind collection.

The inspiration comes from brilliant and famous art pieces combined with the patented jewelry innovation: Stars. They consist of diamonds, sapphires and rubies encased in a fluid filled sapphire dome, which allows them to fall freely, like snowflakes in a snow globe. The result is cascading diamonds which emit light, fire and beauty as they move, like little falling stars; the effect is mesmerizing.

Degas Water Lilies:

Floating white diamonds and pink and blue sapphires on an 18kt white gold setting and white ceramic ring
Guide Price \$ 3,500

Yves Klein, Blue:

Floating white diamonds and two shades of blue sapphires on an 18kt yellow gold setting with diamonds and white ceramic ring
Guide Price \$ 3,800

Yves Klein, Yellow:

Floating white diamonds and two shades of yellow sapphires on an 18kt yellow gold setting and black ceramic ring.
Guide Price \$ 3,500

Rothko:

Floating white diamonds and red rubies on an 18kt yellow gold setting and black ceramic ring.
Guide Price \$ 4,250

Courtesy of Royal Asscher

ITEM 12

Guide Price: \$600



ELEMENTS EARRINGS

Designed by a husband and wife duo originally from India but now based in New York City, these stunning turquoise and 24k gold statement earrings feature unique rose cut diamonds. The rose cut diamond has been around since as early as the 1500s, boasting plenty of fire and sparkle.

Elements has been setting the standard for specialty store shopping in Dallas since 1999. They offer a modern mix of the season's most exciting designers, many of them exclusive to their boutique. Elements was named by Lucky Magazine as the store with "The Greatest Selection of Hip Labels" in Dallas and they continually add new design talent.

Courtesy of Elements

ITEM 13

Guide Price: \$10,000



HOLLYWOOD DOMINO

Bid on two VIP tickets to one of the most exclusive pre-Oscar private events in Hollywood. This invitation-only event gives you the chance to compete with with some of Hollywood's biggest stars in the game of Hollywood Domino.

Terms: Includes 2 VIP tickets to the Annual Pre-Oscar "Hollywood Dominos" Party in Beverly Hills. Will take place at the Sunset Tower in Los Angeles on Thursday February 21, 2013. Only one player is allowed to compete in the Hollywood Domino Tournament and must learn how to play prior to the tournament. Tickets cannot be resold or re-auctioned. Travel and accommodations are not included. Winning bidder and guest(s) subject to security screening.

Courtesy of Hollywood Domino
With special thanks to Ayaan Ahmed

ITEM 14

Guide Price: \$1,800



JIMMY CHOO TERI HANDBAG

This beautiful handbag comes in Off White Leopard Printed Pony.

Jimmy Choo is an iconic luxury lifestyle brand defined by an empowered sense of glamour and a confident sense of style.

The Teri cross body handbag is part of the Jimmy Choo 247 Collection pairing iconic Jimmy Choo materials with classic shapes that make them wearable for everyday.

Courtesy of Jimmy Choo

ITEM 15

Guide Price: \$2,200



HADLEIGH'S GIFT CERTIFICATE PACKAGE

Hadleigh's are generously offering a \$1500 gift certificate towards any bespoke fitting for his and her:

- Signature exclusive slippers
- Shirts
- Suiting, sport coats or trousers
- Bespoke Luggage

You will also receive one cashmere Hadleigh's scarf as part of the package.

Courtesy of Hadleigh's

ITEM 16

Guide Price: \$170



THE IT KIT BY VBEAUTÉ

Serious Skincare. Simplified.
For the girl on-the-go, around town
or around the world.

Don't sacrifice smoother, softer, and younger looking skin just because you're on-the-go. Housed in an uber-chic, designer-inspired gunmetal clutch, the It Kit takes the guesswork out of skincare maintenance by supplying serious skincare essentials in TSA-friendly containers.

Courtesy of vbeauté
With special thanks to Julie Macklowe



LÅNO

LÅNO are exclusive handmade scarves, produced in Italy and Holland, with the highest quality silk and cotton.

Designed to be unique, and in a limited edition. LÅNO is collaboration of Lhana Marlet and Manolis ten Haaf. Lhana Marlet worked as a print designer at Alexander McQueen, realising the Spring/Summer 2010 Atlantis Show and the spring/summer 2010 Ready to wear collection.

In summer 2012 LÅNO was born out of two creative minds.
www.lanoscarves.com

For RE:DEFINE they have donated the "orange" and "blue" of the 2012 SKULL series. 10 scarves priced at \$250 each will be made available to purchase from The Goss-Michael Foundation and also online at www.mtvredefine.com/store

RE:DEFINE

SPECIAL
EDITIONS

RE:DEFINE BY PARRA T-SHIRT

RE:DEFINE ALREADY HAS CLOSE LINKS WITH THE WORLD OF FASHION, AND TO MARK THE LAUNCH OF THE 2012 EVENT WE HAVE TEAMED UP WITH WORLD-RENOWNED ARTIST AND CO-FOUNDER OF CULT APPAREL LABEL, ROCKWELL CLOTHING TO CREATE A STRICTLY LIMITED T-SHIRT EDITION.

Featuring the RE:DEFINE text in Parra's trademark bold hand style, the design is available in an edition of 250, split into 5 different groups of 50. Available in any colour (as long as it's white), each of the 5 groups will feature a highlight in one of the four different RE:DEFINE brand colours, with the fifth group mixing every colour on one shirt.

Printed courtesy of The Public Trust (www.trustthepublic.com) and Printed Threads (www.printedthreads.com), these unique and highly collectible limited edition tee's combine a lightweight 4.3 oz. slim-fit with 100% combed ringspun cotton.

Priced at \$40 + shipping, they are available in sizes S, M, L and XL exclusively from www.mtvredefine.com/store or email info@mtvredefine.com for more details.



MARK ANDREW WEBBER EDITIONED PRINT

AFTER THE OVERWHELMING SUCCESS OF THE INAUGURAL RE:DEFINE EVENT, WE WANTED TO BE ABLE TO OFFER MORE OF YOU THE CHANCE TO PARTICIPATE.

For 2012 we have commissioned one of the brightest emerging voices in print to create a stunning and extremely affordable editioned artwork exclusive to RE:DEFINE.

Award-winning British artist, Mark Andrew Webber is perhaps best known for his trademark typographic city maps, but for RE:DEFINE 2012 he created a geometric masterpiece titled 'Paths of Light'.

Carved from a single sheet of linoleum, the process of creating the final artwork took almost 2 months. The edition is printed directly from the linocut block in collaboration with one of the world's leading artisan printers, Pete Kosowicz from Thumbprint Editions, best known for their fine art etchings for artists including Anish Kapoor, Damien Hirst and Tracey Emin.

To purchase one of these prints, please visit www.mtvredefine.com/store or email info@mtvredefine.com for more details.

Mark Andrew Webber b. 1984

Paths of Light, 2012

2-colour Linocut Print on Paper

109.22 x 99.06 cm (43 x 39 in)

Edition of 100

\$250

SUPPORT A PROJECT

THE MTV STAYING ALIVE FOUNDATION IS OFFERING GUESTS THE CHANCE TO DIRECTLY PARTNER WITH SOME OF THE FANTASTIC PROJECTS WE SUPPORT ON THE GROUND WITH A SPECIAL SUPPORT A PROJECT LOT.

No fine art or luxury experiences here – simply pledge your support towards a program and be rewarded in the knowledge that you are helping a community-based initiative. Help us to achieve our vision – that one day there will be an HIV-free generation.



RE:DEFINE

MTV STAYING ALIVE
FOUNDATION PROJECTS,
SPONSORS + THANKS

ADOLESCENTES Y JÓVENES EN ACCIÓN (AYJA) PERU

STAYING ALIVE FOUNDATION GRANTEE ADOLESCENTES Y JÓVENES EN ACCIÓN (AYJA) ARE WORKING CLOSELY WITH INDIGENOUS YOUTH IN THE PERUVIAN AMAZON THROUGH THE USE OF COMMUNITY RADIO TO RAISE AWARENESS OF HIV/AIDS AND EDUCATE ABOUT PREVENTION.

With an estimated 75,000 people living with HIV in Peru, AYJA is targeting those who fall through the gap, whilst keeping in mind the cultural considerations of their Indigenous identity. AYJA works with four Shipibo Conibo ethnic communities in the Yarinacocha district, where there are no current interventions towards HIV/AIDS in adolescents and young adults.

AYJA identifies four peer promoters in each community to implement and host radio programs - which is the most widespread media used - where they promote and educate about safe sex through culturally appropriate methods.

Along with the radio segments, AYJA use monthly theatre and educational recreation activities in schools and community spaces to educate about HIV prevention and highlight stigma and discrimination associated with the virus.

They conduct capacity building workshops for peer educators throughout the year to develop the radio programs and create culturally appropriate information, education and communication materials.



TRACE KENYA

TRACE KENYA USE INNOVATION AND CREATIVITY TO TARGET A KEY POPULATION THAT HAS FALLEN THROUGH THE GAP IN HIV PREVENTION. KENYA IS HOME TO ONE OF THE WORLD'S HARSHTEST HIV/AIDS EPIDEMICS, WITH AN ESTIMATED 1.5 MILLION PEOPLE LIVING WITH HIV.

Based in Kenya's south-west, Gilgil town is the headquarters for some of the country's influential military and paramilitary services. The Western Command of the Kenyan Army, the Anti-Stock Theft Unit of the Kenyan police force and the training school of the National Youth Service College are all based in Gilgil.

This Staying Alive Foundation funded project Marching Away from HIV and AIDS is specifically designed to reach out to young uniformed officers with HIV awareness campaigns inside the camps. Due to the nature of their jobs and their location, HIV prevention outreaches are limited and access to information is overlooked.

With an intention to reach 15,000 military and paramilitary youths, TRACE Kenya use interactive games including the Condomlympics (Condom Olympics), conduct ongoing peer education training, sensitization forums among the Gilgil community, offer Voluntary Counseling and Testing (VCT) services within three camps and conduct the Chanuka Challenge - translating to 'be informed' in Swahili. It involves knowledge testing on HIV/AIDS related issues, STIs, stigma and discrimination.





JESSICA OLSSON- NOWITZKI

CO-CHAIR

Jessica Olsson-Nowitzki is the Associate Director of The Goss-Michael Foundation, a non-profit organization founded by George Michael and Kenny Goss. The Goss-Michael Foundation exists to educate, engage and inspire audiences by presenting exhibitions of British Contemporary art, provide vast resources, educational programs and scholarships to aspiring artists.

Olsson began working as the Collection Manager for The Goss-Michael Foundation from its founding in June 2007. Over the past five years, Olsson has participated in the exhibitions of various world renowned artists such as Sarah Lucas, Tim Noble and Sue Webster, Richard Patterson, Michael Craig-Martin, and Jim Lambie among others.

As Associate Director of the Foundation, Olsson aids in the development and implementation of comprehensive marketing strategies, communications and public outreach programs in order to position the Foundation as an important regional and cultural institution.

ANNA-SOPHIA VAN ZWEDEN

CO-CHAIR

Passionate, worldly, and inquisitive are a just a few words to describe Anna-Sophia van Zweden. An aspiring Renaissance woman who has deep appreciation for the arts, fashion and culture, van Zweden is a rising star globally.

This fall, van Zweden will be embarking on Sotheby's prestigious Art and Business Masters program at Sotheby's Institute of Art in New York.

Born November 6, 1984 in Amsterdam, van Zweden's admiration for the arts stems from her parents, artist and art educator Aaltje van Zweden-van Buuren and conductor and violinist Jaap van Zweden, current Music Director of the Dallas Symphony Orchestra.

She attended the Amsterdam School of the Arts Reinwardt Academie and the University of Amsterdam where she majored in Museum Studies with a minor in Art History and Cultural History. Her thesis explores the differences, interactions and relationships between private art collectors in the Netherlands and Dallas.



HOST COMMITTEE

Co-chairs

Jessica Olsson-Nowitzki & Anna-Sophia van Zweden

Host Committee

Ayaan Ahmed
Jenna Alexander
Lita Asscher
Anais Assoun
Alexandra Baker
Jackie Bolin
Natalie Bond
Kary Brittingham
Bri Crum
Gabrielle de Papp
Mimi & Ian Edmonds
Jenny Galliher
Brian Gibb

Kim Hoedeman
Jackson
Nha Khanh
Kim Korenvaes
Leanne Malouf
Hanh Merriman
Jennifer Miller
Alfonso Montiel
Tyler Muse
Laura Noble
Rajan Patel
Ana Pettus
Lauren Preston

Ariel Saldivar
Marisa Seaman
Vinita Schroeder
Kirby Schlegel
Vinita Schroeder
Marisa Seaman
Jason Sheeler
Courtney Sinelli
Kristy Stubbs
Maxine Trowbridge
Lady Halina von Kempiski-
Behrendt
Logan Waller

After Party Committee

Ayaan Ahmed
Matthew Giese

SPONSORS

joule

Neiman Marcus

NANCY AND
RICHARD ROGERS

ic! berlin 

BELVEDERE
VODKA



smartwater^{GLACÉAU}



RIO ROOM

THE
RUBIN FAMILY
FOUNDATION

THANK YOU

The MTV Staying Alive Foundation:

Georgia Arnold
Sara Piot
Shay Nolan
David Meredith
Chloe Musgrave

The MTV Staying Alive Foundation Board:

Natalia Cales, Chris Davis, Shawn Decker,
Garrett English, Carl Folta, Michael Madnick,
Kambasu Obed, Arletty Pinel, Peter Piot,
Bill Roedy, Timothy Rosta.

MTV Social Responsibility

Chris Phillips
Siobhan Rae

MTV PR

Seema Alibhai
Bernadette Simpao
Adrienne Andang

Shearman & Sterling LLP

Jessica Neilson

The Future Tense

Ed Bartlett
Paul Missing
Chloe Nelkin

Phillips de Pury & Company

Simon de Pury
Philae Knight
Fiona McGovern
Giulia Constantini

Flight Logistics

Steve Moxon-Riedlin

Live Auctioneers

Erwin Hungerbuhler

Charitybuzz

Ben Erwin

Studios and Galleries

Pete Kosowicz
David & Vicky Farhi
Tim Fennell
Marion de Baecque
Caroline Gaudriault
David Mackay
Simon Cole
Juanita Boxill
Jessica Watts
Hannah Freedberg
Lucy May
Harriet Mitchell
Monika Pfau
Jane Wickstead
Phil Mayer
Trish Goodwin
Ben Rubin
Kristine Virsis
Marie Goble
Annet Gelink

The Goss-Michael Foundation:

George Michael
Kenny Goss
Joyce Goss
Jessica Olsson-Nowitzki
Shawn Williamson
Brenda Matamoros
Kevin Jacobs
Kate Esbenshade
Jason Koen

Volunteers:

Natalie Hendrickse
Natasha Stokes
Forrest Aderholt
Angie Reisch
Kai Assoun
Bryan Prater
Benny Ramos
Edgar Vasquez
Allison McDonald
Robert Johnson
Samantha Carp
Sydney Thompson
Elsbeth Weempe
Greer Goss
Fergus DePapp

Neiman Marcus:

Gabrielle DePapp
Sandy Marple

The Buzzell Company:

Barbara Buzzell
Alex Baker
Ellen Fryer

Planet Productions:

Brian Brothers
David Brown

DJ:

Jennifer Miller
Jeff Mitchell

Dallas Police Department:

Sergeant John Nash

Special Thanks to our Corporate Sponsors:

The Joule Hotel
Neiman Marcus
Richard and Nancy C. Rogers
ic!berlin
Royal Asscher
RBC Wealth Management/
Rubin Family Foundation
Phillips De Pury
The Goss-Michael Foundation
Inez Van Lamsweerde and Vinoodh Matadin
Belvedere Vodka
Ben E Keith Beverage Distributors
smartwater

Red Bull
D Magazine
RP Valet
Rio Room
Dallas Mavericks
The Dallas Symphony Orchestra
Stella McCartney
Tootsies
Which Wich
Timothy Oulton
Benefit Cosmetics
Flywheel Sports
Equinox
Hollywood Domino
Hadleigh's
Suite 206
Sprinkles Cupcakes
Niven Morgan
vbeauté
Jimmy Choo
Grangehall

Special Thanks:

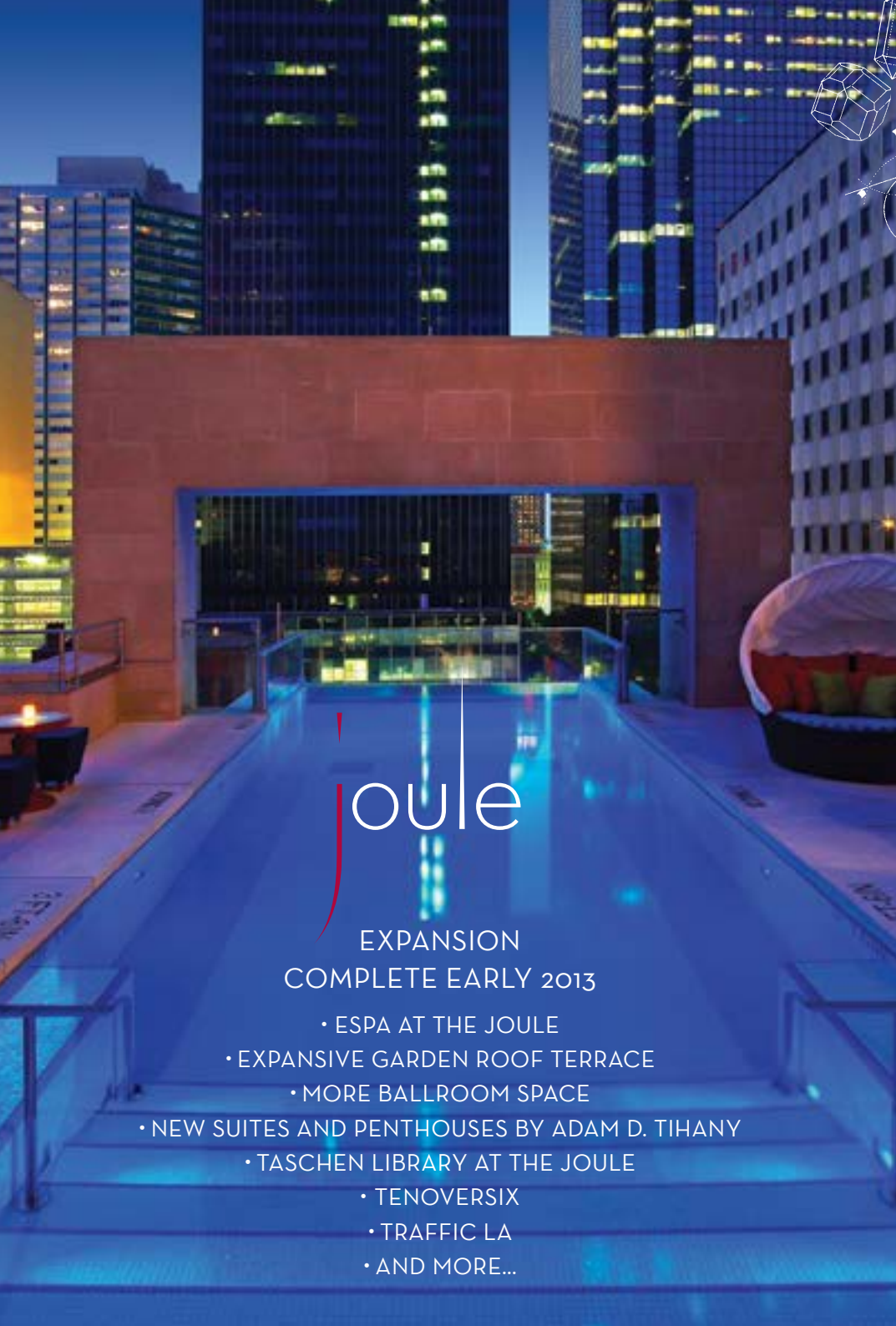
Anna-Sophia van Zweden
Ana Pettus
Yancey Smith
Jaap van Zweden
Ariel Saldivar
Amy Espinosa
Bri Crum
Jennifer Gallither
Brian Gibb
Lady Halina von Kempfski-Behrendt
Susie Straubmueller
Julie Macklowe
Leanne Malouf
Lita Asscher
Nha Khanh
Todd Hirsch

Original RE:DEFINE concept

by Julie Allen, developed in collaboration
with The Future Tense

Catalogue and RE:DEFINE branding

Ben Wundersitz (beyondhippodrome.com)



joule

EXPANSION
COMPLETE EARLY 2013

- ESPA AT THE JOULE
- EXPANSIVE GARDEN ROOF TERRACE
- MORE BALLROOM SPACE
- NEW SUITES AND PENTHOUSES BY ADAM D. TIHANY
- TASCHEN LIBRARY AT THE JOULE
- TENOVERSIX
- TRAFFIC LA
- AND MORE...



THE JOULE DALLAS 1530 MAIN STREET DALLAS, TX 75201

thejouledallas.com

TRAFFIC

TASCHEN

TENOVERSIX



RACHEL ZOE

Neiman Marcus

Belvedere is a quality choice. Drinking responsibly is too. Belvedere vodka 40% ALC/VOL (80 PROOF), 100% neutral spirits distilled from rye grain. ©2012 Imported by Mod. Hennessy USA, Inc., New York, NY.



SAME BELVEDERE VODKA. SPECIAL EDITION BOTTLE.

BUY. GIVE. SAVE LIVES.

(BELVEDERE)^{RED} Special Edition Vodka gives 50% of its profits to the Global Fund to fight HIV/AIDS in Africa.

Belvedere is a proud partner of (PRODUCT)^{RED}TM



IDEAL DINNER GUEST



NO MATTER THE SEASON,
THIS BROOKLYN NEIGHBOR
WILL BE THE LIFE OF
THE DINNER PARTY.



BROUGHT
TO YOU
BY:



Flight Logistics Group are proud to support MTV RE:DEFINE

Specialists in international fine art logistics and shipping, from concept to consignment.

QUOTE 'MTV REDEFINE'
www.flightlg.com



Eric C. Green

CEO

eric.green@rtresolutions.com

Christopher J. Gramlich, Sr.

President & COO

chris.gramlich@rtresolutions.com

214.599.6363 | 1349 Empire Central, Ste. 150 | Dallas, TX 75247



1349 Empire Central, Suite 150
Dallas, Texas 75247

214-599-6363

Eric C. Green | CEO
eric.green@rescapadvisors.com

Christopher J. Gramlich, Sr. | President & COO
cgramlich@rescapadvisors.com

*Specializing in the Purchase of Defaulted Mortgages
and Other Distressed Assets*



Leaving a Lasting Imprint On Our Communities

At RBC Wealth Management, we believe that our most visible imprint is made through the great work being done by the organizations we support.

We are proud to support the MTV Staying Alive Foundation.

Jay Liberman

Associate Vice President - Financial Advisor

jay.liberman@rbc.com

www.jayliberman.net



RBC Wealth Management®



RIO ROOM

Proud hosts of the official
RE:DEFINE after party

rioroom.com

THANK
YOU



RE:DEFINE

TERMS + CONDITIONS

GUIDE FOR PROSPECTIVE BUYERS

Conditions of Sale

The Conditions of Sale which appear in this catalogue govern the auction.

Bidders are strongly encouraged to read them as they outline the legal relationship between the Staying Alive Foundation and the buyer and describe the terms upon which property is bought at this auction.

Buyer's Premium

There is no buyer's premium payable on any of the lots unless bidding online, where a 3% fixed premium will apply.

Sales Tax

There is no sales tax payable on any of the lots, unless specifically stated otherwise.

Pre-Sale Estimates

Pre-sale estimates are intended as a guide for prospective buyers. Any bid within the high and low estimate range should, in our opinion, offer a chance of success. However, lots may also achieve prices below or above the pre-sale estimates. Pre-sale estimates do not include any applicable sales tax.

Condition of Lots

Unlike a traditional auction, all works in this sale have been sourced directly from the artists, their studios and galleries, and the majority are brand-new works exhibited here for the first time. As such, the condition of each lot is 'as the artist intended' unless otherwise specifically noted. However, as with any such event we encourage all prospective buyers to inspect the property at the pre-sale exhibitions and recommend, particularly in the case of any lot of significant value, that you retain your own restorer or professional advisor to report to you on the property's condition prior to bidding.

If a lot is sold framed, the Staying Alive Foundation accepts no liability for the condition of the frame.

Pre-Auction Viewing

Pre-auction viewings are open to the public and free of charge. Our specialists are available to give advice and condition reports at viewings or by appointment.

Reserve

Unless indicated otherwise, all lots in this catalogue are offered subject to a reserve. A reserve is the confidential value below which a lot may not be sold. The reserve for each lot is generally set at a percentage of the low estimate and will not exceed the low pre-sale estimate.

BIDDING IN THE SALE

Bidding at Auction

Bids may be executed during the auction in person by paddle, via the Internet or by telephone, or prior to the sale in writing by absentee bid. Proof of identity in the form of government-issued identification will be required, as will an original signature. We may also require that you furnish us with a bank reference.

Bidding in Person

To bid in person, you will need to register for and collect a paddle before the auction begins. All lots sold will be invoiced to the name and address to which the paddle has been registered and invoices cannot be transferred to other names and addresses. Please do not misplace your paddle. In the event you lose it on the night, inform a staff member immediately. At the end of the auction, please return your paddle to the registration desk.

Bidding by Telephone

If you cannot attend the auction, you may bid live on the telephone with one of our staff members.

This service must be arranged at least 24 hours in advance of the sale. Telephone bids may be recorded. By bidding on the telephone, you consent to the recording of your conversation. We suggest that you leave a maximum bid in advance, which we can execute on your behalf in the event we are unable to reach you by telephone or the connection is lost during the call.

Bidding Online

This auction features secure online bidding simultaneous with the live auction. To register for this service please visit www.mtvredefine.com/absentee_bidding.php

Absentee Bids

If you are unable to attend the auction, the Staying Alive Foundation will be happy to execute written bids on your behalf.

A bidding form can be found at www.mtvredefine.com/absentee_bidding.php or requested via bid@mtvredefine.com. This service is free and confidential. Bids must be placed in the currency of the sale. Our staff will attempt to execute an absentee bid at the lowest possible price taking into account the reserve and other bidders. Always indicate a maximum bid, excluding any applicable sales tax. Unlimited bids will not be accepted.

Any absentee bid must be received at least 24 hours in advance of the sale. In the event of identical bids, the earliest bid received will take precedence.

Bidding Increments

Bidding generally opens below the low estimate and advances in increments of up to 10%, subject to the auctioneer's discretion. Absentee bids that do not conform to the increments set below may be lowered to the next bidding increment.

\$1,000 to \$2,000 by \$100s
 \$2,000 to \$3,000 by \$200s
 \$3,000 to \$5,000 by \$250s
 \$5,000 to \$10,000 by \$500s
 \$10,000 to \$20,000 by \$1,000s
 \$20,000 to \$30,000 by \$2,000s
 \$30,000 to \$50,000 by \$2,500s
 \$50,000 to \$100,000 by \$5,000s
 \$100,000 to \$200,000 by \$10,000s
 above \$200,000 at the auctioneer's discretion

The auctioneer may vary the increments during the course of the auction at his or her own discretion.

AFTER THE AUCTION

Payment

Buyers are required to pay for purchases immediately following the auction unless other arrangements have been agreed in writing in advance of the sale. Payments must be made in US Dollars either by cash, cheque or wire transfer.

Credit Cards

The Staying Alive Foundation will accept Visa, MasterCard and American Express to pay for invoices of \$100,000 or less. A processing fee will apply.

Collection

It is our policy to request proof of identity on collection of a lot. A lot will be released to the buyer or the buyer's authorized representative when the Staying Alive Foundation has received full and cleared payment and we are not owed any other amount by the buyer.

We will levy removal, interest, storage and handling charges on uncollected lots.

Loss or Damage

The Staying Alive Foundation accepts liability for loss or damage to lots for a maximum of five days following the auction.

Transport and Shipping

Please note that we do not provide packing, handling or shipping services directly. However, we will coordinate with shipping agents instructed by you in order to facilitate the packing, handling and shipping of property purchased at this sale.

Export and Import Licences

Before bidding for any property, prospective bidders are advised to make independent enquiries as to whether a licence is required to export the property from the United States or to import it into another country. It is the buyer's sole responsibility to comply with all import and export laws and to obtain any necessary licences or permits. The denial of any required licence or permit or any delay in obtaining such documentation will not justify the cancellation of the sale or any delay in making full payment for the lot.

CONDITIONS OF SALE

The Conditions of Sale set forth below govern the relationship between bidders and buyers on the one hand, and the Staying Alive Foundation on the other hand. All prospective buyers should read these Conditions of Sale carefully before bidding.

1 INTRODUCTION

Each lot in this catalogue is offered for sale and sold subject to: (a) the Conditions of Sale (b) additional notices and terms printed in other places in this catalogue, including the Guide for Prospective Buyers, and (c) supplements to this catalogue or other written material posted by the Staying Alive Foundation in the saleroom, in each case as amended by any addendum or announcement by the auctioneer prior to the auction.

By bidding at the auction, whether in person, through an agent, by written bid, by telephone bid, by online bid or any other means, bidders and buyers agree to be bound by these Conditions of Sale, as so changed or supplemented.

These Conditions of Sale, as so changed or supplemented, contain all the terms on which the Staying Alive Foundation contract with the buyer.

2 BIDDING AT AUCTION

(a) The Staying Alive Foundation has absolute discretion to refuse participation in the sale. All bidders must register for a paddle prior to bidding, supplying such information and references as required by the Staying Alive Foundation.

(b) When making a bid, whether in person, by absentee bid or on the telephone or Internet, a bidder accepts personal liability to pay the purchase price, plus all other applicable charges unless it has been explicitly agreed in writing with the Staying Alive Foundation before the commencement of the auction that the bidder is acting as agent on behalf of an identified third party acceptable to the Staying Alive Foundation and that we will only look to the principal for such payment.

3 CONDUCT OF THE AUCTION

(a) The auctioneer has discretion at any time to refuse any bid, withdraw any lot, re-offer a lot for sale (including after the fall of the hammer) if he or she believes there may be error or dispute and take such other action as he or she deems reasonably appropriate.

(b) The auctioneer will commence and advance the bidding at levels and in increments he or she considers appropriate. In order to protect the reserve on any lot, the auctioneer may place one or more bids on behalf of the seller up to the reserve without indicating he or she is doing so, either by placing consecutive bids or bids in response to other bidders.

(c) The sale will be conducted in US Dollars and payment is due in US Dollars.

(d) Subject to the auctioneer's reasonable discretion, the highest bidder accepted by the auctioneer will be the buyer and the striking of the hammer marks the acceptance of the highest bid and the conclusion of a contract for sale between the seller and the buyer. Risk and responsibility for the lot passes to the buyer.

(e) If a lot is not sold, the auctioneer will announce that it has been 'passed', 'withdrawn', 'returned to owner' or 'bought-in'.

(f) Any post-auction sale of lots offered at auction shall incorporate these Conditions of Sale as if sold in the auction.

4 PAYMENT

(a) Unless otherwise agreed, a buyer is required to pay for a purchased lot immediately following the auction regardless of any intention to obtain an export or import licence or other permit for such lot.

(b) Title in a purchased lot will not pass until the Staying Alive Foundation has received the full purchase price for that lot in cleared funds. The Staying Alive Foundation is not obliged to release a lot to the buyer until title in the lot has passed and appropriate identification has been provided, and any earlier release does not affect the passing of title or the buyer's unconditional obligation to pay the purchase price.

5 REMEDIES FOR NON-PAYMENT

Without prejudice to any rights the seller may have, if the buyer without prior agreement fails to make payment of the purchase price for a lot in cleared funds within five days of the auction, the Staying Alive Foundation may in our sole discretion exercise one or more of the following remedies: (i) store the lot at the buyer's sole risk and expense; (ii) cancel the sale of the lot, retaining any partial payment of the purchase price as liquidated damages; (iii) charge interest at 12% per annum from the date payment became due until the date the purchase price is received in cleared funds or (iv) commence legal proceedings to recover the purchase price for that lot, together with interest and the costs of such proceedings.

6 LIMITATION OF LIABILITY

(a) Subject to sub-paragraph (e) below, the total liability of the Staying Alive Foundation and our affiliated companies to the buyer in connection with the sale of a lot shall be limited to the purchase price actually paid by the buyer for the lot.

(b) Except as otherwise provided in this Paragraph 6, none of the Staying Alive Foundation or any of our affiliated companies (i) is liable for any errors or omissions, whether orally or in writing, in information provided to prospective buyers by the Staying Alive Foundation or any of our affiliated companies or (ii) accepts responsibility to any bidder in respect of acts or omissions, whether negligent or otherwise, the Staying Alive Foundation or any of our affiliated companies in connection with the conduct of the auction or for any other matter relating to the sale of any lot.

(c) All warranties express or implied, including any warranty of satisfactory quality and fitness for purpose, are specifically excluded by the Staying Alive Foundation and our affiliated companies to the fullest extent permitted by law.

(d) Subject to sub-paragraph (e) below, none of the Staying Alive Foundation or our affiliated companies shall be liable to the buyer for any loss or damage beyond the refund of the purchase price referred to in sub-paragraph (a) above, whether such loss or damage is characterized as direct, indirect, special, incidental or consequential, or for the payment of interest on the purchase price to the fullest extent permitted by law.

(e) No provision in these Conditions of Sale shall be deemed to exclude or limit the liability of the Staying Alive Foundation or any of our affiliated companies to the buyer in respect of any fraud or fraudulent misrepresentation made by any of us or in respect of death or personal injury caused by our negligent acts or omissions.

7 COPYRIGHT

The copyright in all images, illustrations and written materials produced by or for the Staying Alive Foundation relating to a lot, including the contents of this catalogue, is and shall remain at all times the property of the Staying Alive Foundation, and such images and materials may not be used by the buyer or any other party without our prior written consent. The Staying Alive Foundation makes no representations or warranties that the buyer of a lot will acquire any copyright or other reproduction rights in it.

8 LAW AND JURISDICTION

(a) The rights and obligations of the parties with respect to these Conditions of Sale, the conduct of the auction and any matters related to any of the foregoing shall be governed by and interpreted in accordance with New York State law.

(b) For the benefit of the Staying Alive Foundation, all bidders and sellers agree that the courts of New York State are to have exclusive jurisdiction to settle all disputes arising in connection with all aspects of all matters or transactions to which these Conditions of Sale relate or apply. All parties agree that the Staying Alive Foundation shall retain the right to bring proceedings in any court other than the courts of New York State.

(c) All bidders and sellers irrevocably consent to service of process or any other documents in connection with proceedings in any court by facsimile transmission, personal service, delivery by mail or in any other manner permitted by New York State law, the law of the place of service or the law of the jurisdiction where proceedings are instituted at the last address of the bidder or seller known to the Staying Alive Foundation.



